

making
furniture
for
people

SITS

COLLECTION 2025

NEWS 2025

EMILY	20
EDVIN	22
BILL	24

BEST OF SITS

ALEX	28
BRANDON	30
IMPULSE	34
JENNY	38
LILL	40
MOA	42
SALLY	46
STELLA	48
MILOU	50
EDDA	54

SOFAS AND CORNERS

ASTA	58
BONNIE	60
CLYDE	62
EMMA	64
GUSTAV	66
CLEO	68
ANNIE	70
FREJ	72
ALVA	74
CHARLIE	76
DOMINO	78
ELTON	80
KARIN	84
LINNEA	86
HUGO	88
JUSTUS	92
LIAM	94
LUDVIG	96
PAUL	98
TOKYO	100
OHIO	102

SIGGE	104
VILLE	106
VERA	108
PETRA	110
SOPHIA	112
VALENTIN	114
POLLY	116
NOVA	118
KARLA	120
TEDDY	122
BIANCA	124
JOHN	126
QUATTRO	128
MILANO	130
PALMA	132
MYNTA	134
PHOENIX	136
TIMJAN	138
ELIS	140
BRITT	142
VIDAR	144
FLYNN	146
MALTE	150
SARA	154
VIKTORIA	156
CLOUD	158
HEAVEN	160
NEW YORK	164
JULIA	166
COLORADO	170
SOFA BEDS	
FELIX	174
PIXIE	178
HENRY	180
FRANCES	182
LUCY	184
LUKAS	188
STINA	190

ARMCHAIRS

DISA	194
SIV	196
UMA	198
ALICE	200
CLARK	202
ELSA	204
ALMA	206
SIRI	208
OLIVER	210
ROSS	212
MINI	214
MOKKA	215
ISA RELAX	216
JACK	220
VALENTIN	222
GRETA	224
PLAY	226
AMY	228
PENNY	230
FATTY	232
CIRCLE	234

DINNING CHAIRS

CLARK	238
JENNY BISTRO	240
MOA BISTRO	242

OUTDOOR

DAHLIA	246
LOTUS	248

COFFE TABLES


LOVE	252
CASUAL	254
SPACE	256
TETRIS	258



A photograph of a living space. On the left, a portion of a cushion with a black and white pattern is visible. In the center, a textured, light-colored wall with some cracking is shown. On the right, a large green plant with variegated leaves is potted in a dark green container on a matching saucer. The floor is a light, neutral color. The text "comfortable" and "life" is overlaid in white, with "life" in a larger, cursive font.

comfortable
life





We look back on a history in which we have found new ways of manufacturing furniture and have gone from a company employing dozens to one employing thousands, with a presence in more than twenty European markets, US and Canada.

And it seems we are not the only ones who recognize that we are on to something. Being chosen to be a supplier to one of the largest home furnishing companies in the world has meant a lot – for developing our business, as well as for the encouraging stamp of approval it brings.

In 2022 we became part of *Danish Actona Group*, a very important and promising step for our company's development and future.





Handmade in Europe

The SITS brand is derived from decades of hard work, dedication, and passion for furniture design and manufacturing. With European production in our own state of the art factories, we combine modern manufacturing techniques with the expertise of more traditional furniture craftsmanship skills, to make products that we are proud to wear the SITS name.



ECO-friendly solutions

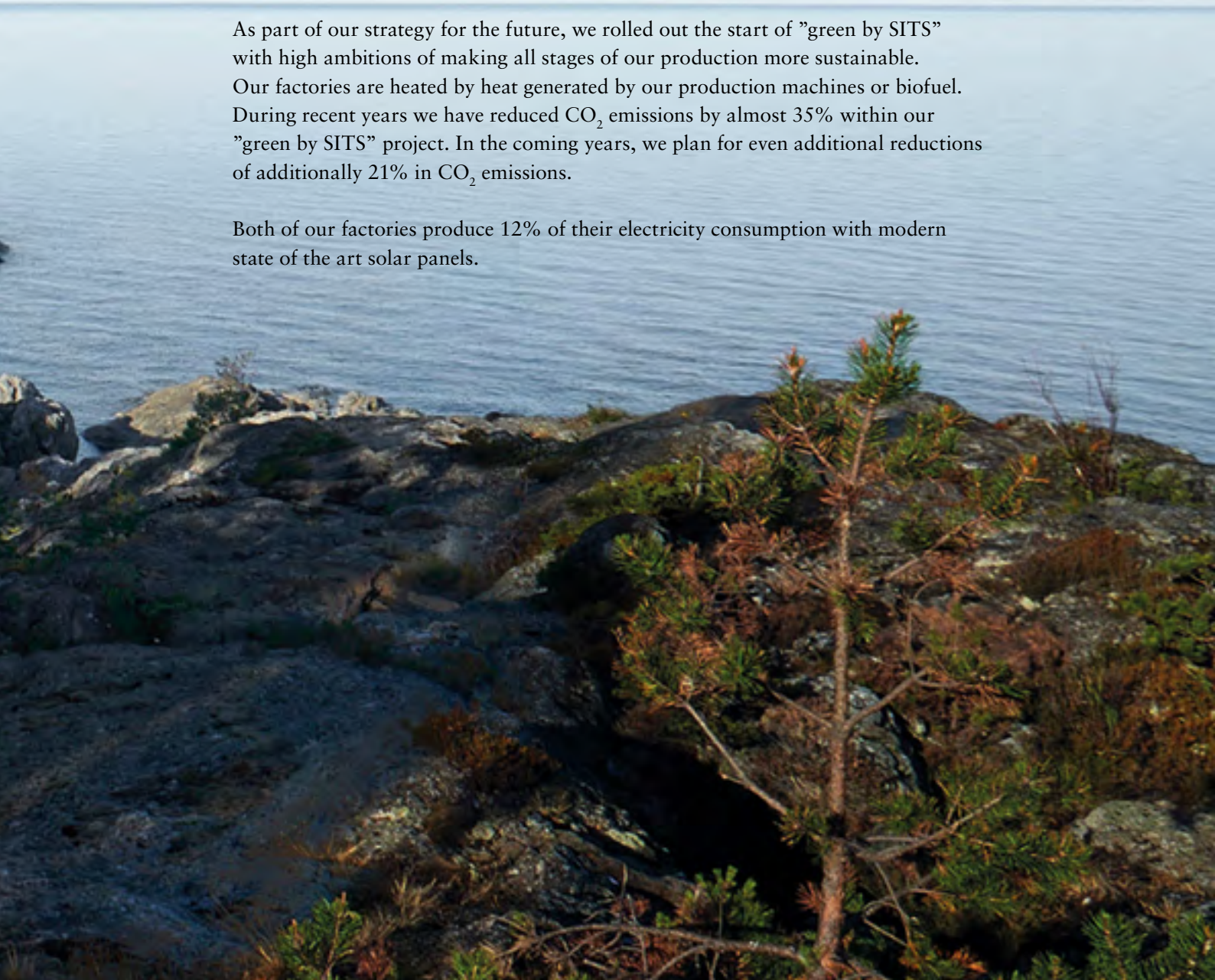
At SITS we always do our best to include eco-friendly solutions, both present and in the future. With our own modern European factories and eco-friendly incentives, SITS strives to provide comfortable, fashionable furniture with as little impact on the environment as we possibly can.

A production line with zero emissions is always our final destination, although we are not there yet. Sustainability is a never-ending journey. One which we are excited to take on and dedicate our best efforts to navigate in the best possible way.

”Green by SITS”

As part of our strategy for the future, we rolled out the start of ”green by SITS” with high ambitions of making all stages of our production more sustainable. Our factories are heated by heat generated by our production machines or biofuel. During recent years we have reduced CO₂ emissions by almost 35% within our ”green by SITS” project. In the coming years, we plan for even additional reductions of additionally 21% in CO₂ emissions.

Both of our factories produce 12% of their electricity consumption with modern state of the art solar panels.





Recycled fabrics

At SITS we strive to source and use materials and textiles that meet our high ambition and standards, with regard to both qualities, sustainability, and modern-day trends. For instance, several of our fabric options comes from recycling.

Nori, a fabric made out of plastic waste gathered from the oceans, is a popular, durable, and washable fabric in lovely shades of grey, green and blue. This unique fabric is confirmed by SEAQUAL license.

ISO 9001 certificate

Providing high-quality products is a priority for our company. Setting quality requirements and consistently implementing them not only leads to high customer satisfaction and savings in the production process, but also develops SITS as a brand and builds an international reputation.

Our quality management system has received the international ISO 9001:2015 certificate, which was awarded to us by TUV Rheinland Polska Sp. z o.o.

The ISO 9001 certificate is an objective proof that all processes in our company are oriented towards achieving high quality.



What are you *in the mood for?*

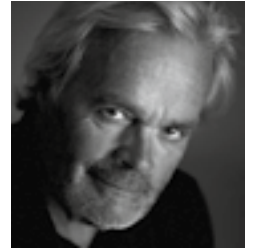
We've chosen to arrange our products by inspiration. Think of our collections as clusters united by a certain feeling rather than categories divided by origin, material or designer. That's why we call them mood collections.

In every mood there are certain features that form the basis for the collection. But the mood is there just to inspire, leaving the final decision up to you. If you think a certain sofa belongs to a different setting than we suggest, who are we to say otherwise?

our designers



STEVEN SCHILTE. Started his career as a student at the Design Academy in Eindhoven. From there he has built a successful career as a product designer working for such renowned companies as Jan des Bouvrie, before going freelance. His furniture designs have won several awards, for instance at the »Salon du Meuble« in Paris, the red dot design awards, the interior innovation award, as well as been nominated for the German Design Prize.



NIELS GAMMELGAARD. A renowned designer who studied under Erik Herløw at the Royal Danish Academy of Fine Arts in Copenhagen, Niels graduated in 1970 and went on to cofound Pelikan Design with Lars Mathiesen, designing everything from small pencils to tricycles and hospital beds. Pelikan is best known for its design of commercial furniture, with many of the most prestigious Danish furniture manufacturers—including Fritz Hansen, Bent Krogh, Fredericia and Erik Jørgensen – among its clients.



DAN IHREBORN. A freelance designer since 1991 with specialities in contemporary furniture and office environments, Dan brings a refreshing perspective to SITS: »For me, sofas and easy chairs should give a simple, light and resilient impression, even if they have powerful volume. They should, of course, also be really comfortable and easy to care for. But above all, their design must last longer than ordinary trends.«



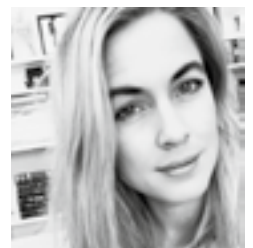
IAN ARCHER. With a passion for sculpture and product design, Ian studied furniture in Birmingham, graduating from the School of Architecture and Design in 1989. He then worked in contract furniture before establishing himself as a furniture designer and then a design director in the domestic upholstery industry. With interests that embrace both classic and modern design, Ian formed his own consultancy. Today his work can be seen in such stores as John Lewis, Heal's, Laura Ashley, Harrods and Couch, as well as many other independent retailers across the UK, Europe and Asia.



BÖTTCHER&KAYSER is a Berlin-based studio working in the fields of consumer product, furniture, lighting and interior design. It was founded in 2007 and is running today by Moritz Böttcher and Nikolaus Kayser.

Moritz Böttcher (1978) graduated as an industrial designer at the University of Applied Sciences and Arts in Hannover in cooperation with Dornbracht. He worked at npk industrial design in Hamburg and the Netherlands, Barskidesign in Frankfurt and from 2006 to 2008 for Werner Aisslinger in Berlin.

Nikolaus Kayser (1978) is a qualified carpenter and studied industrial design at Muthesius Kunsthochschule in Kiel. After his diploma he worked for three years as a designer at wiege Entwicklungsgesellschaft. His focus there was in the field of high-quality office furniture, especially on chairs for the German manufacture Wilkhahn.



ANNA NÄSSTRÖM. Anna is more or less born on the upholstery factory floor, as she is the daughter in the family that started SITS almost 30 years ago. With a strong passion for Scandinavian design and a soft spot for deep and soft sofas that really embraces you, her first sofa Lill is now released. With a background in fashion- and graphic design as well as years of work with communication at SITS, it was about time to design her first sofa piece and be sure there is more to come.



We are Nikolaj and Kasper. We are Says Who Design. We are both designers, and we work together for furniture manufactures and brands. Our style is rooted in the great traditions of Scandinavian design, and its love for simplicity, minimalism and functionality. We are part of the movement of New Scandinavian Design. On one hand we respect our design heritage, and on the other hand, we reinvent it to fit into our present time. Designing can be a very strange process. Especially when there are two people involved. It can seem like the most chaotic and crazy thing. Conflicting ideas and odd materials everywhere. But the truth is, that it's the freedom, chaos and irrational thoughts that bring inspiration to an otherwise quite technical and precise production. Maybe that's why we enjoy working together so much. We're two sides of the same coin. Chaos and order. Engineering and creativity. "Says Who?" is a question and a bold statement about challenging our traditions and expectations. It is a question that we like to ask a lot. And we invite you to take part.





news 2025



Emily

Discover Emily, our exquisite modular sofa. With its elegant curved bench and wide chaise longue, it offers both style and relaxation. Crafted with precision and sustainability in mind, Emily promises timeless design and bespoke comfort, making it the perfect centerpiece for any sophisticated home.

Willow 1 off-white.



Edvin

The Edvin modular sofa brings comfort to every corner of your living space. Its adaptable design lets you rearrange pieces to fit your personal style, while ensuring that each seat feels just right. You'll find yourself sinking into cushions with rollers that offer a perfect balance of support and softness, making it the ideal choice for unwinding alone or enjoying time with loved ones. With Edvin, you'll discover a world where stylish living and cozy comfort blend seamlessly.

Rock 3 beige





Bill

The Bill armchair, captivating in its design, features with rounded in shape cushion and a durable metal frame. Available in luxurious leather or fabric, and complemented by exquisite oak finishes, it offers customizable heights and armrest styles. This piece uniquely combines timeless elegance with modern comfort, elevating any sophisticated living area.

Aniline latte.







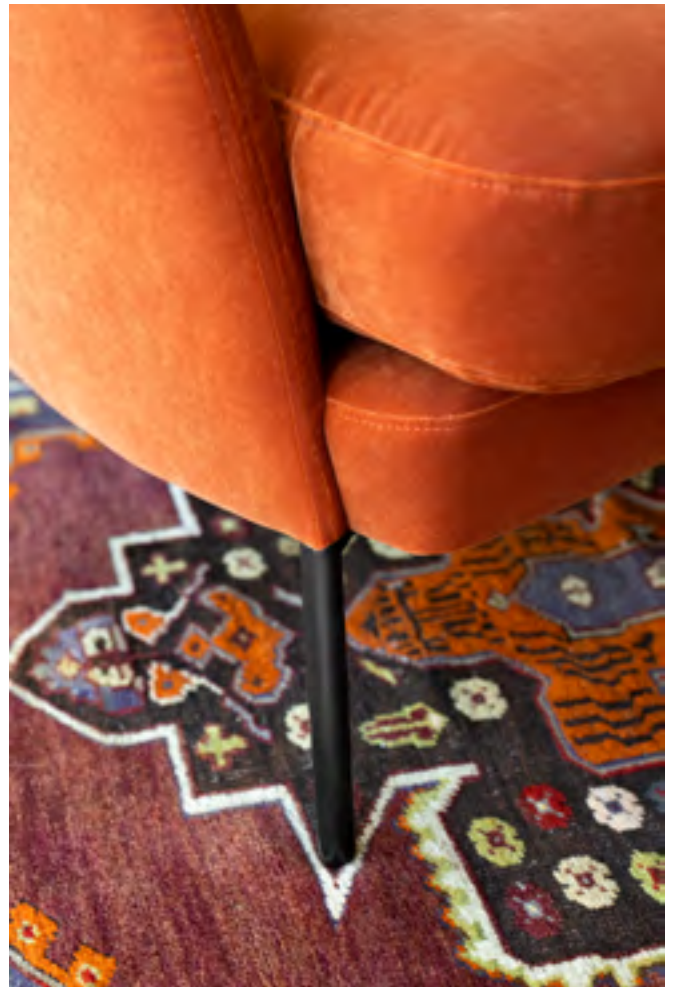
best of sits



Alex

The unique backrest and tilted ergonomic footstool distinguishes our bestseller Alex and adds character to the entire room. And while the good looks may catch your attention, it is the exceptional comfort that will make you return.

*Design: Dan Ihreborn.
Classic velvet 19 rust.*





Brandon

A fresh combination of comfort and simplicity supported by a modern touch, Brandon's simple shape is a starting point – choose the basic model to serve as a comfortable and elegant piece of furniture. Or go a step further and design your own modular sofa, or opt for the specially designed module that creates a gentle, eye-catching curve.

Stipa 4 natural.









Impulse

How do you want your sofa to look? Add your own personal touch by choosing metal or wooden legs. You can also choose the type of armrest, add armrest cushions, and opt for a fixed or removable cover. All these touches will help give Impulse your unique style.

Caleido Stampato 9 dark blue.









Jenny

Elegant, cosy or surprising? Jenny takes design cues from Scandinavia with delicate proportions and minimalism. Yet it offers everything you could wish for in the comfort department. It just does things, well, differently, and delightfully so. So what's your choice: Elegant, cosy or surprising? We'll put our money on a combination of all three.

*Design: Ian Archer.
Wildflower 2 cold beige.*







Lill

Why make a fuss? With clean, simple lines and a single deep and long seat cushion you've got all you need to create a comfortable, elegant sofa. Add the choice of a fixed cover, or a loose one with a skirt and you've got Lill.

*Design: Anna Näsström.
Linen 007 1 natural.*



Moa

If you are looking to add a clear identity and character to your room, look no further than Moa. It is Bound to become a contemporary classic, this modern and playful sofa is both laidback and stylish at the same time. The styling is smooth and elegant, and combined with the elegantly curved lines - this sofa carries a unique urban expression. And better yet, it is just as comfortable as you want it to be.

Design: Steven Schilte.

Bloom 1 cream.









Sally

Kids love to play with cushions. Select your backrest cushion size (small, large or a mix of both) and order additional lumbar cushions and headrests to create a playful, friendly space with room for eve-ryone. And a tip for parents: choose a washable cover, just in case.

Heather 2 light beige.





Stella

Looking for a sofa for the whole family, but with a light, stylish look inspired by Scandinavian design? Well, you might not have to look any further. Stella combines comfort and functionality with an elegantly slight frame a multitude of options.

Heather 6 olive brown.









Milou

The Milou modular sofa is as iconic in every sense as it is Scandinavian. This versatile and modern range allows you to create a formation of comfort with VISCO foam that adapts individually to the shape of human body temperature. The Milou system is available in a wide array of modular configurations, all designed to offer a more relaxed lounging experience. Signature wooden tray details give it a contemporary and exclusive touch that is visually compelling too. Milou is the perfect companion for the whole family or occasions when you host guests in the house

*Design: Böttcher & Kayser.
Star 2 beige.*







Edda

This bold and contemporary modular sofa system honors generosity and flexibility with a design inspired by urban architecture ideas of modern casual living spaces. With Edda, you get the freedom to create your very own space from softly upholstered modules and elements with loose covers fastened by velcro. A sofa with comfort that invites you and your loved ones to relax and hang out. Edda projects freedom, unity and individuality - in countless configurations of cosiness and superior comfort!

*Design: Böttcher & Kayser.
Rock 1 natural.*







sofas and
corners



Asta

Asta is the sofa that you simply need. Whether entertaining guests or enjoying a quiet evening alone, this sofa promises unparalleled comfort and an inviting atmosphere. Sink into the cushions, upholstered in premium and relax after the long day. Make your sofa more customized by adding to it different available elements.

Design: Ian Archer.

Wildflower 3 teddy brown.





Bonnie

Discover the ultimate comfort with our Bonnie. This stylish and inviting sofa is designed to transform your living space into a relaxing sanctuary. With its modern yet timeless design, Bonnie effortlessly complements any decor, making it a versatile addition to your home.

*Design: Ian Archer.
Wildflower 2 cold beige.*



Clyde

Upgrade your lounging experience with this elegant and comfortable sofa. Clyde can make every space more cozy. Moreover, Clyde adds a touch of understated elegance, elevating the aesthetic of any room. This is perfect option for all types of living space.

*Design: Ian Archer.
Lario 2007 wine red*







Emma

Adorn your living room with the Emma, and let its elegance and charm transport you to the best moments of your life while elevating your interior to new heights of sophistication. With its blend of classic allure and modern comfort, this sofa is a true masterpiece.

*Design: Ian Archer.
Willow 1 off white.*



Gustav

Gustav simultaneously is universal and stylish. Its timeless design is a celebration of elegance that transcends trends, making it a true statement piece. It will seamlessly integrating every part of your home space.

Design: Steven Schilte.

Classic velvet 18 raspberry pink







Decoration pillows not included

Cleo

Cleo is just as luxurious as it is generous to allow the whole family to come together and hang out in grand style. With bold and unconventional forms, dynamic shapes and international styling, this modular sofa is a loungers dream come true. With quilted detailing and upholstery adding softness, nothing is left to chance. This sofa should be enjoyed as much for its comfort, as for its iconic and luxurious style.

*Design: Ian Archer.
Caleido stampato 2 beige.*





Annie

Annie is the visionary interior decorator's dream come through. This contemporary and flexible modular sofa system can transform any room into a stylish and impressive space with its clean and soft lines. Annie's presence is unquestionably bold and beautiful, as it allows for your imagination to flow as you can combine the various elements to suit your personal needs and style.

Sky 4 gold beige.





Frej

Stripped from all excess and designed around a concept of the contrast between architectural simplicity and inviting softness, Frej stands out from the crowd. With modern, long, sweeping lines and minimalistic aesthetics, it is a sofa that brings a sophisticated and timeless elegance to any high demand interior space or living room. Why not make this sofa even more personal and combine a smooth leather covered frame with natural fabric cushions for a unique contrasting look? With "Frej" the choice of elegance and style is truly yours.

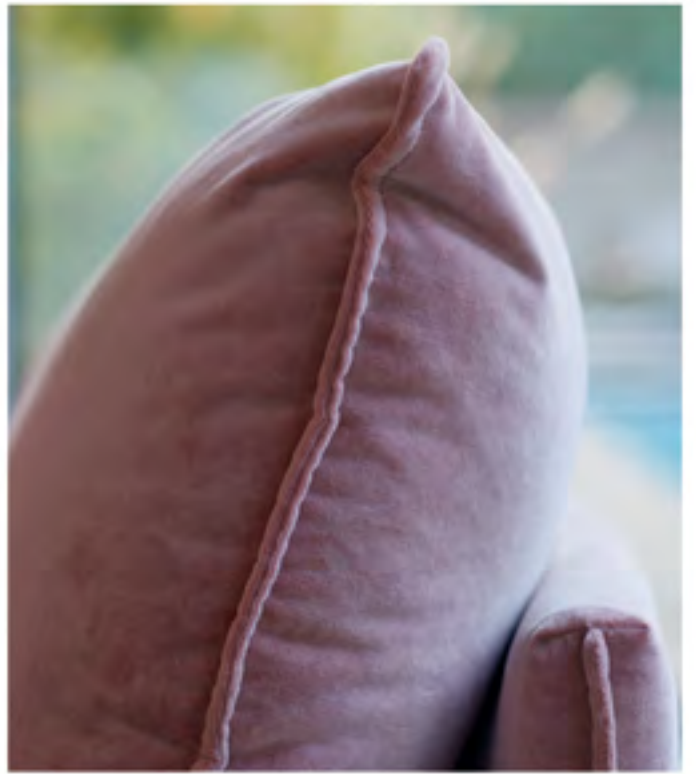
Design: Böttcher & Kayser.

Aniline 6 opal.





Decoration pillows not included



Alva

The minimalistic shape and elegant details make Alva a distinctive design in itself. But the real magic happens when you are added to the mix. Move, extend, and re-arrange it any way you like to create your very own expression.

The modules of Alva can be combined into many different combinations. The range also includes an armchair and a small sofa. Malibu Velvet 8 powder pink - fabric out of the collection.





Charlie

The sleek, light look is created by the distinctive upper front panel and thin seat cushion. But don't let that fool you – this sofa lacks nothing in softness. And with an inspiring range of modules it offers unlimited possibilities, including new funnel-shaped wooden legs.

Design: Steven Schilte.

Lario 05 light brown. Tweedy 4 brown - fabric out of the collection. Paris 7 light grey - fabric out of the collection.





Decoration pillows not included



Domino

This Domino collection will never fall, at least not short of options. With a multitude of different modules you can easily create your arrangement to enrich any interior. And to further add to the wealth of options, Domino is available in many different upholstery fabrics.

Elmas 15 grey - fabric out of the collection.





Decoration pillows not included





Elton

If Scandinavian style is at the top of your list, Elton is just as classic as it is spot on stylish. The high legs of this sofa system make it easy on the eye, the selection of two types of armrests allows you to make it as personal as you like. Make your Elton sofa luxurious by choosing a leather cover. And while you are at it - enjoy clean and beautiful lines of a 3-seater with 1-seat cushion. Elton is a rarity that will attract just as many compliments as it will give you comfortable evenings at home.

Nori 3 grey-beige.







Karin

The curvy elegance of Karin brings contemporary style to any interior, draws you in and wraps you in comfort. The choice of fabric or leather finetunes the furniture to your preferences, along with the option of wooden or metal feet.

Design: Ian Archer.

Viola 11 dark grey - fabric out of the collection.





Linnea

A simple design that allows more room for comfort. That is the philosophy behind Linnea. Comfortable backrests and cushions turns the sofa into the perfect retreat, appearing to hover over ground thanks to the almost invisible legs.

Every module is freestanding, to give you even more options and flexibility.

Ivy 5 vintage red - fabric out of the collection.





Hugo

The clue is in the cushions. A high resilient foam guarantees comfort and the smooth look of the seat and rear surface. Hugo also offers the choice of comfort lux or standard cushions with stitching to provide an individual and sensual touch.

Design: Ian Archer.

Sky 1 off-white.











Justus

A clearly defined geometric shape combined with soft, delicate, feather-filled seats – what’s not to love about that? Wide armrests and the use of a frame with metal legs further accentuates this modern yet highly practical piece of furniture. And there’s more: The collection consists of many items that can be freely arranged to fit your desire.

*Design: Niels Gammelgaard.
Willow 1 off-white.*



Liam

Arrange it any way you like – the possibilities are endless! Choose your favourites from a wide range of freestanding and connectable units or pick one of the ready-made sets. For this model we are also proud to offer our new comfort option, which features luxurious cushions filled with allergen-free silicone balls.

Elyot 8 green.



Decoration pillows not included



Ludvig

Perfectly balanced proportions with a futuristic edge. It's a look that is modern, light and bound to make an impression. Especially when you take a seat. Because despite the contemporary design, it offers plenty of good, old-fashioned comfort.

Ludvig is made with Dynaflex, which provides elastic comfort in a thin frame.

Tulip 4 copper brown - fabric out of the collection.







Paul

Masculine, sophisticated and very contemporary in its design. Paul embodies an urban modern interior aesthetics with its clean, straight lines that almost seem to float on air. This sofa series is for those looking to make a clear statement of contemporary style in their living space. A confident choice of class and comfort that doesn't make any excuses.

Classic velvet 19 rust.





Tokyo

Create spectacular arrangement solutions with this modern line of modular furniture. Top quality materials and a wide range of elements allow your personal touch to shine through.

Design: Niels Gammelgaard.

Drom 54 grey - fabric out of the collection.



Decoration pillows not included





Ohio

Minimalist in everything but comfort. This is a sofa designed for modern interiors, sophisticated in terms of design and modular furniture. Arrange it yourself or choose from our suggested sets, all with thicker seat cushions filled with highly flexible foam or natural down.

Nancy 2 beige - fabric out of the collection.

Decoration pillows not included



Sigge

Comfort all around, that's what Sigge is about. Want to use the armrest as your backrest? No problem, we've made both just as soft and comfy. And thanks to the modular design, you can create your own arrangement, including your choice of legs and fabric or leather cover.

*Design: Steven Schilte.
Sneak 5 grey.*



Ville

Bold, confident and comfy. Ville claims its space like few others. To add to the personality it comes in two versions – with or without buttons. And to really make your mark why not go for piping in a contrasting colour?

*Design: Ian Archer.
Moss 7 cold beige.*







Vera

Refined elegance and understated luxury. Vera embodies a contemporary expression with subtle yet important detailing which adds to the slightly formal impression of this sofa series. Combine the varied sets and create your own tailored style for a very comfortable sofa, love seat or armchair with a slightly higher back cushion.

*Design: Ian Archer.
Elyot 8 green.*





Decoration pillows not included





Petra

Looking for the ultimate choice of customisation, variety and comfort? Our Petra series offers it all with its wide offering of sets and combinations. With a modern classic look, Petra is designed for those seeking a sofa to blend in with their existing style and interior preference. No matter which Petra style you go for, trust that it will quickly leave you longing to snuggle up with your friends and family!

Buddy 2 light beige - fabric out of the collection.







Sophia

For those dreaming to lounge in extraordinary high comfort and classic grand style, make Sophia the centrepiece of your room. With its symmetric styling based on wide armrests which are in level with the back, this sofa is also great to the eye. As an added bonus, it comes in many different models, colours, and materials to choose from to provide the best solution for your interior needs.

Moss 14 dark blue.



Decoration pillows not included



Valentin

High finish detailing, handcrafted quality and unique Scandinavian design. Valentin fuses the key elements of tufting sofas and combines them into something new and exciting. There is just as great volume to the back and armrests, as there is modern sophistication to its strong identity. Bring out a classic look by matching rich velvets and exposed wooden legs, or give it a modern luxurious twist with a flat weave fabric and metal legs. The choice is yours.

Design: Ian Archer.

Linen 007 5 grey.





Polly

Sometimes it just feels right. Like when you sit down in Polly. The level of comfort is just how you like it. The same goes for softness of the fabric, and the cushions are a dream to curl up with. Just like it should be.

Moss 1 mustard.





Nova

Does this sofa feel familiar to you? If it does, it might not come as a surprise to find out that the designers reached back to the 70's for inspiration and came up with a piece of furniture that has great contemporary appeal. The richness of colour, textures and additional armrest cushions adds a modern touch.

*The armrest cushions are held in place with zippers.
Paris 1 beige - fabric out of the collection.*







Karla

With Karla, we've only written the opening chapter – the rest is up to you. But whatever modules you choose to construct your story, we're sure it will be one of high-quality materials and craftsmanship.

Caleido stampato 11 grey-brown.





Teddy

Has comfort ever looked better? The distinctive quilt that covers the seat, armrests and cushions of Teddy is an invitation to enjoy. Customize the sofa or armchair to your tastes by choosing wooden or metal legs, standard or lux comfort and your type of cover (fix or loose with velcro).

Design: Steven Schilte.

Atropa 6 cognac. Atropa 7 camel.





Decoration pillows not included

Bianca

With the whole family curled up in the sofa, accidents are bound to happen. But there is no need to worry; with a replaceable cover you can refresh your sofa as often as you like!

Caleido stampato 6 olive.





John

As your family grows, so can John. A contemporary design made from quality materials that blends well into any room. The wide selection of components and upholstery allows you to be creative and practical at the same time. Why not add the large footstool to use as an additional seat, or to replace a coffee table?

Moss 3 orange.







Quattro

Quattro offers a comprehensive collection with durable and elegant contemporary design. Arrange the sofas, corner sofas, armchairs, and footstools to your liking – even at different angles if you want. And here’s an insider tip for you: we’ve designed the armrest to double up as a convenient shelf perfect for snack trays when you curl up in the corner.

Nori 7 green.





Decoration pillows not included



Milano

In a really large sofa there's more room for comfort. That sounds reasonable, doesn't it? But there's more to Milano than just the size and comfort. It's also easy to use and can be arranged freely to fit your interior.

Moss 9 light brown.

Palma

Allow us to introduce a classic: The Palma family has been a Sits staple for years. A straight-forward, timeless design that offers soft, comfortable seating no matter which of all the different options you choose.

Velvy 9 blue.





Mynta

Mynta is made to look like you want it to. The simple design invites you to explore colours, fabrics, feet and even different extensions for the backrest. No matter what you choose, it will always be as stylish as it is comfortable. And the high seat will allow for easy access to everyday comfort.

*Design: Niels Gammelgaard.
Bloom 8 grey.*





Phoenix

A classic design that is unaffected by time – and will continue to be so, thanks to the resilient, highly elastic foam filling that keeps Phoenix in shape year after year. As a bonus, it comes with two extra cushions.

Stipa 8 turquoise - fabric out of the collection.









Timjan

Timjan is easy to live with. Higher legs makes it easier to reach under the sofa for cleaning. Added height makes getting in and out of the sofa easier. And if you wish to become even more comfortable, that's easy too. Just include the special head rest elements to support your head and neck.

Design: Niels Gammelgaard.

Science mores 6 steel - fabric out of the collection.





Elis

The modules, the merrier – especially if you're talking about modules. And it's never been more true than for Elis. Our modular supersofa can take on any number of shapes and sizes, allowing you to create just the comfort zone you wish for.

Vireal 1 natur - fabric out of the collection.

Britt

Britt embraces the classic values of Scandinavian simplicity and the joy of bringing families together. This is a sofa that is equally generous as it is comfortable whilst still looking smart.

Britt is designed to match homeowners that appreciate and value great, simple and tasteful interior design with a cosy twist and high quality. Lovers of popcorn and marathon movies should make sure not to miss the option of the wide chaise lounge, as it is large enough to make room for two! The ravioli cushions will add that extra plush style, softness and comfort to your Britt.

*Design: Anna Näsström.
Caleido sampato 1 natural.*







Vidar

Vidar is designed with an appearance that is up to date, inviting and yet at the same, it has a really timeless expression. The loose cushions and carefully selected materials presented in stylish linear shapes draws you in and encourages you to sit back, relax and put your feet up! And you don't have to worry about creating a little mess either. You see, Vidar is equipped with a completely removable cover that not only looks chic but is very practical too! Choose a washable cover and you can wash it in your own machine.

*Design: Ian Archer.
Timber 6 cream.*



Flynn

As playful as it is functional and comfortable, Flynn might very well be the ultimate modular lounge sofa for those who don't want to compromise aesthetics and function. With Flynn, you can create variation and interrupt conventional shape and forms, in an individualised low lounge look that offers the same comfort of a full backrest sofa. Do you need more strong arguments? All modules and elements comes with loose covers fastened by velcro for easy removal too. It really is the best of both worlds, and we encourage you to experience it.

*Design: Steven Schilte.
Sky 7 green.*









Malte

Create furniture that fits perfectly into your interior. May we suggest a fabric to highlight the design of Malte, or a velvety or chenille fabric to streamline its shape? With the highest level of comfort, and a design tailored to your need the final piece is yours to add.

Elyot 1 natural.





Decoration pillows not included







Sara

A romantic and elegant look that delivers all the comfort and softness you expect from the design. Be sure not to miss the wooden buttons on the back. A sign of the craftsmanship and attention to detail that characterises Sara.

*Design: Dan Ihreborn.
Tweedy 1 natural - fabric out of the collection.*









Viktoria

Once you tried it, we think you'll agree: This level of comfort cannot be a coincidence. And of course it isn't. It's created by using carefully selected materials in the backrest and the seat cushions. Extra attention has also been given to the armrests, which form an ideal support for your arms and neck. And now it's all your to enjoy!

Stipa 4 nature.



Decoration pillows not included



Cloud

Don't let the elegant upholstery and decorative sides fool you. Even if appearances are important, the real hero here is comfort. A perfect combination of high, supportive armrest and the softness of the cushions will allow you to create your very own Cloud of cosiness.

Moss 2 dark green.



Heaven

Let comfort come easy. With a wide offer of sofas, armchairs, footstools and corner groups, finding an arrangement that fits into your life is a doddle. The irresistible plush seat cushions and backrest is filled with down. And thanks to the removable covers, we've also got you covered in case of a small accident.

Willow 1 off-white.

Poodle 3 beige - fabric out of the collection.











New York

With its large size and deep seats, New York is the best place for getting together with your friends. The feather-filled cushions are soft, and lumbar cushions give additional back support. With its removable covers, this is a sofa you will be able to enjoy for many years.

Rock 1 natur.



Julia

Can you ever have too much of a good thing? The feather-filled softness of Julia offers you a choice between different comforts, covers and feet – not to mention all the different shapes and sizes on offer. Too much? Surely not.

Design: Dan Ihreborn.

Sky 2 light grey.







Colorado

The more, the merrier. And Colorado offers plenty of comfort and space to share with your loved ones. Bolster your family celebrations with plenty of cushions and togetherness, there's bound to be something for everyone with armchairs, sofas and corner sofas available in various sizes and arrangements.

Bloom 2 teddy brown.







A close-up photograph of a mustard yellow sofa cushion. The fabric has a fine, pebbled texture. The cushion is curved, and the text 'sofa beds' is printed in a white, serif font across its center. The background is a light-colored wooden surface with vertical planks.

sofa beds



Felix

Designed with both ideal proportions and ideal practicality, this is the sofa bed for those who appreciate minimalist aesthetics and the beauty of simple straight lines. Felix is available as a 3- or 4- seater and both options can be combined with a chaise lounge, making it the ultimate sofa for an unexpected sleepover party!

*Calypso 4 khaki green - fabric out of the collection.
Atropa 7 camel.*





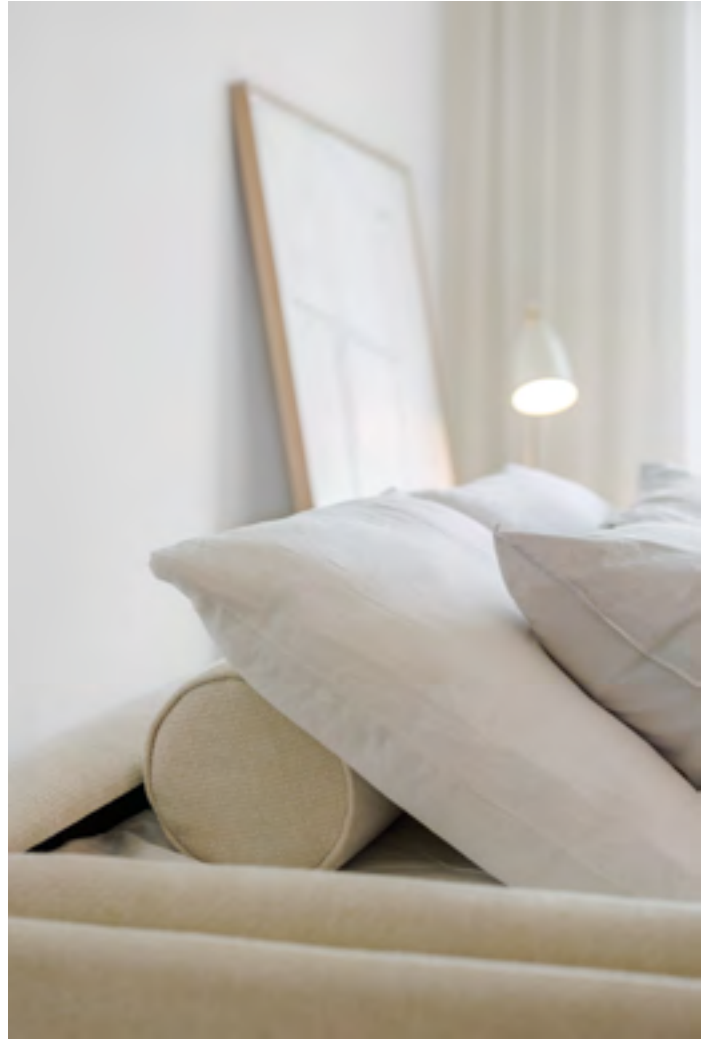




Pixie

This clean, modern design sofa is sure to complement a living room in every style and every size - depending on your choice from the Pixie family of models. During the day, this sofa offers comfortable and spacious chilling area for more than yourself - even extra storage is available for you to choose. When the evening arrives, the Pixie sofa is quick and easy to transform in order to enjoy plenty of sleeping space. Narrow armrest and round metal legs in a chrome finish gives an extra glam look to the piece.

*Design: Dan Ihreborn.
Bloom 1 cream.*





Henry

Henry is all class and no complications. It's easy to fall in love with this sofa bed, and it is just as easy to fall asleep in it too. To make it even harder to walk away from this little gem, you get to choose between 4 versions with optional corners and a chaise lounge with a practical storage compartment. Match Henry with your favourite cover and you will realise that you now have an incredible good-looking roommate too.

Lilac 3 light grey.



Frances

Get cozy and enjoy precious moments at home with the charming sofa bed family. Frances is easy to convert into a bed, so it will surely be perfect when you need an extra sleeping place for your guests or if you want to save some space during the day. It's a well-disguised and elegant sofa bed that offers more than the eye can tell. Frances offers two mattress options - it is a sofa and a bed that will last for many years and nights to come for sure.

Design: Dan Ithreborn.

Classic velvet 21 caramel.





Lucy

Challenge accepted. Turn something as practical as a sofa bed into a stylish piece of furniture. And do not forget, it should be just as comfortable and useful for a good nights sleep as for marathon viewing your favourite show. Our sofa bed Lucy passes the test with excellence. Available in two sizes and with optional storage, it should provide plenty of customization options for the picky ones as well.

Lilac 1 natural.









Lukas

Looks are deceiving. From the outside it looks just like a regular sofa, but inside there's a generous, comfortable bed with a real mattress just waiting to be released in three simple moves. The perfect solution when you don't want your guests to leave, or to help you triumph over the challenges of living in a small space.

Caleido 1420 white.





Decoration pillows not included

Stina

Stina is very likely the ultimate sofa bed in disguise. With a welcoming rounded shape and generous expression, Stina will be equally appreciated for its strikingly modern visual looks as for its practicality and high comfort. Stina is voluminous, looks inviting, and when converted into a bed, you will be surprised that the sleeping comfort is no different to the comfort of a real bed! No wonder it is a pleasure to rest both eyes and body on this model.

Design: Böttcher & Kayser.

Bloom 3 warm yellow.







A close-up, low-angle photograph of a textured fabric surface, likely the upholstery of an armchair. The fabric has a fine, woven pattern in shades of beige and light brown. The lighting is soft and directional, coming from the upper left, which creates a gentle shadow and highlights the texture of the material. The background is a blurred, warm-toned surface, possibly a wall or another part of the chair, in a light beige or cream color. The overall mood is calm and sophisticated.

armchairs





Disa

Find your oasis of comfort with the Disa armchair. This chic and inviting armchair is the perfect blend of style and relaxation. Disa is both practical and elegant. Placed it in a cozy reading nook or as an accent piece in your living room – this is your choice.

Wildflower 8 dusty pink.







Siv

Crafted with your comfort and interior aesthetics in mind, our chair combines functionality, Scandinavian design, and luxurious comfort. Made from a sturdy wooden frame, our chair not only captivates with its aesthetics but also ensures durability for years to come. Wood also adds a natural charm. Perfectly contouring to the curves of your body, each sit becomes a pleasure, and evening relaxation takes on a new dimension. It's not just furniture—it's an element that gives your interior a unique character.

Design: Ian Archer.

Elyot 1 natural. Aniline 4 natural.

Uma

An armchair design flirting with the 70s. With a strong identity of imagination, playfulness, style and perfect proportions. This contemporary classic is unique in its character and yet it can blend in with a great variety of spaces and interiors. Make a choice between classic round legs, or a discreet and elegant swivel. Use your imagination and explore the variations of fabrics and watch Uma transform in front of our eyes!

Design: Steven Schilte.

Willow 1 off-white.

Poodle 3 beige - fabric out of the collection.

Wildflower 5 warm yellow.







Alice

With a shape inspired by the first letter in the Alphabet, Alice combines beauty and well-weighted balance in perfect harmony. As the lines flow seamlessly, the presence of this armchair is unmistakably Scandinavian in its design. With high minimalistic legs and an extra lumbar cushion, this comfortable and stylish piece almost hovers in the room while inviting you in to have a seat.

*Design: Dan Ihreborn.
Willow 3 mustard.*







Clark

Light on its feet, yet convincingly stable. The design of Clark delivers on the promise made by the shiny steel frame and the equally well-balanced upholstery. A young and dynamic look, that fits well into any interior.

Design: Niels Gammelgaard.

The chair is also available with an armrest.

Willow 6 green.



Elsa

A classic look never goes out of style. The perfect proportions with simple, but characteristically shaped armrests make Elsa a contender for the easychair Hall of Fame. A neckrest pillow provides comfort and the high, thin wooden legs add to the slender silhouette.

*When you want to put your feet up, why not do it on Elsa's matching ergonomic footstool?
Elyot 10 turquoise.*





Alma

Take a thick and springy seat, add a soft back cushion with decorative buttons, and a rounded backrest that seems to embrace you. If you do it right you'll end up with Alma – the quintessence of comfort. Our version also comes with a bonus: Each part of this armchair can be made of a different type of fabric.

Poodle 1 cream - fabric out of the collection.



Siri

Siri puts comfort first. A timeless design, with two different seat depths allows you to relax and unwind. Put your feet up on the footstool and return to the real you.

*Design: Dan Ithorn.
Wildflower 3 teddy brown.*









Oliver

Defined by its conspicuous metal frame, Oliver is a stylish addition to any room. But this chair is not just about design. Have a seat and you'll soon notice that there's more to Oliver than good looks.

*Design: Ian Archer.
Heather 2 light beige.*





Ross

The Ross armchair is just as eye-catching as it is original. It is a designer piece that won't surely go unnoticed with its voluminous, playful, and round shapes. This modern-cool designed wingback armchair is undoubtedly a perfect addition to your living space, leisure room, or lounge, blending in with any contemporary interior style. The high wooden legs, upholstered backrest with decorative pleatings, and a thickly padded seat and footstool, all contribute to, and ensure top levels of comfort.

*Design: Ian Archer.
Willow 1 off-white.*

Mini

Petite. Chic. Elegant. Comfortable. Though not necessarily in that order. Mini is what you make of it. But we can promise you one thing: it will not go un-noticed. With vertical stripes and its chubby shape this chair proves that being small should never stop you from making a big impression.

*Design: Dan Ithreborn
Lario 58 blue.*





Mokka

Offering the versatility of a pouffe, but equipped with a profiled backrest for seating comfort, Mokka plays many parts. The handy size means it's easy to move around to wherever you feel there's a need for an extra seat, or just a stylish companion piece of furniture.

Aniline 2 cognac. Elyot 4 salmon.





Isa relax

A recliner is for taking it easy, what else? And no chair proves the point better than Isa, with added points for looking good even when it's on standby. Available in a number of different covers and cushioning options, Isa is guaranteed to ease into any interior.

*Design: Niels Gammelgaard.
Aniline 2 cognac.*





508 mac

MP
MONTAGNA

351 601 01

151

151

151

A modern armchair with a light wood frame and black leather upholstery is the central focus. The chair has a simple, clean design with a slightly curved backrest and armrests. It is positioned in a room with a textured, light-colored wall and a window in the background. Large green plants are visible on the left side of the frame, adding a natural element to the scene. The lighting is soft and natural, coming from the window.

Jack

Make no mistake. With its natural wooden frame and distinctive design, Jack is, without doubt, a luxurious armchair with a masculine and contemporary appeal. Designed around the idea of timeless elegance, style and Scandinavian craftsmanship - this is one for the history books. And one for the great storytellers too.

*Design: Ian Archer.
Aniline 8 black.*



Valentin

High finish detailing, handcrafted quality and unique Scandinavian design. Valentin fuses the key elements of tufting sofas and combines them into something new and exciting. There is just as great volume to the back and armrests, as there is modern sophistication to its strong identity. Bring out a classic look by matching rich velvets and exposed wooden legs, or give it a modern luxurious twist with a flat weave fabric and metal legs. The choice is yours.

*Design: Ian Archer.
Linen 007 5 grey.*







Greta

There is something about Greta. Maybe it's the gentle curves of the backrest, the beautiful wooden legs or the way you feel when you sit down. That familiar feeling of belonging, like it's part of you and not just a beautiful part of your home.

Classic velvet 15 green - fabric out of the collection.





Play

PLAY is the name for our new family of armchairs, consisting of five different designs: POP, TUNE, SOLO, FUNK and SWING. Each of these compact chairs come with a matching footstool and a choice of wooden or metal legs.

Design: Ian Archer.

Aniline 7 grey. Paris 2 yellow - fabric out of the collection.

Lario 1402 dark green.

Avena 1 beige - fabric out of the collection.

Carlina 5 brown-grey - fabric out of the collection.

Matrix light grey - fabric out of the collection.



Amy

Lean back and enjoy the comfort of Amy, a charmingly simple design and the perfect place for letting hours pass by. Find your own level of plushness by choosing between leathers and fabrics.

Design: Steven Schilte.

Caleido stampato 1 natural.









Penny

Thinking about an easychair that provides support and comfort all in one? With a pillow to rest your back against, and perhaps an optional foot stool for putting your feet up?

Well, here's a Penny for your thoughts.

Design: Dan Ihreborn.

Classic velvet 18 raspberry pink.

Fatty

This family of Scandinavian style footstools make their mark with confidence and beauty. Pick any size you want, small or large, circular or square. A truly unique footstool that will add character and a personal touch to its surroundings. And did we mention that they're surprisingly comfortable as well?

Design: Anna Näsström.

Aniline 4 natur. Specchio 4 navy blue. Specchio 10 anthracite. Arya 4 grey.

Classic velvet 21 caramel. Wildflower 4 caramel. Wildflower 7 pale rust.





Circle

Enchantingly simple, this perfectly shaped pouffe can work magic in any interior. Use it as an extra seat or two, invent your own way of using it, or let it add a touch of roundness to soften up the feel of your interior.

Country 5 light turquoise, 4 dark green, 8 steel, 6 blue, 7 dark blue, 10 pink, 11 light grey, 9 stone, 12 grey - fabrics out of the collection.









dinning
chairs



Clark

Light on its feet, yet convincingly stable. The design of Clark delivers on the promise made by the shiny steel frame and the equally well-balanced upholstery. A young and dynamic look, that fits well into any interior.

Design: Niels Gammelgaard.

The chair is also available with an armrest.

Lario 1404 anthracite.



Jenny Bistro

Easy on the eye, but anything but lightweight. Jenny bistro is a solid construction with an elegant touch, offering great seating comfort for use at home as well as in public spaces.

Design: Ian Archer.

Elyot 11 dark blue. Moss 14 dark blue.







Moa Bistro

If you have been looking for a stylish dining chair that doesn't compromise comfort, look no further than the Moa Bistro chair. Designed to match with a wide variety of tables and forms, this contemporary chair will accommodate many longed for dinner conversations we never want to end. Your choice of wooden legs or a metal frame is available "à la carte" to match your unique style and preference! Furthermore all fabric cover options comes with loose covers fastened by velcro for easy removal too.

Design: Steven Schilte.

Bloom 6 green. Sky 7 green.







The image features a background of horizontal wooden planks with a natural, weathered texture. In the foreground, a plant with thin green stems and several dark red flowers is visible, some in focus and others blurred. The word "outdoor" is centered in a white, lowercase serif font.

outdoor

Dahlia

outdoor/indoor

Dahlia is an outdoor sofa made only from components tested to withstand the influence of the outdoor elements. As the name suggests, the design is inspired by a flowering garden and its organic and ever-changing natural beauty. With its smooth feminine shapes, rounded armrests and loose hanging cover, Dahlia is modern and relaxed at the same time. Place it pool-side, on the terrace or chill out in your favourite spot of the garden. Of course, you are welcome to bring its elegance inside your house as well! With its removable cover, Dahlia can easily be changed to match the mood of the seasons and extend its longevity too.

Design: Ian Archer.

Maple 1 off-white.







Lotus

outdoor

The Lotus sofa family will look lovely in a garden or a patio, but it can just as well be a perfect addition to your indoor living space. With exceptional comfort of sitting, modern chic Scandinavian design, and durable materials made to withstand the outdoor elements – Lotus will become your favorite spot to hang out and relax in style. If you feel like stretching out a little extra under the sun, do not miss to check out the daybed version. All elements come with a suitable winter cover to protect them from moisture and evening dew.

Design: Steven Schilte.

Pine 1 natural.







coffee tables





Love

Don't you just love a good table? One that marks its presence in the room without taking over. Sturdy and solid as proof of genuine craftsmanship, yet designed with a delicate and elegant touch. When you find one like that, it must be Love.

Design: Niels Gammelgaard.





Casual

A wood table with a light touch.
It can also hold a practical
tray for all the things you want
to have within reach.

Design: Dan Ihreborn.

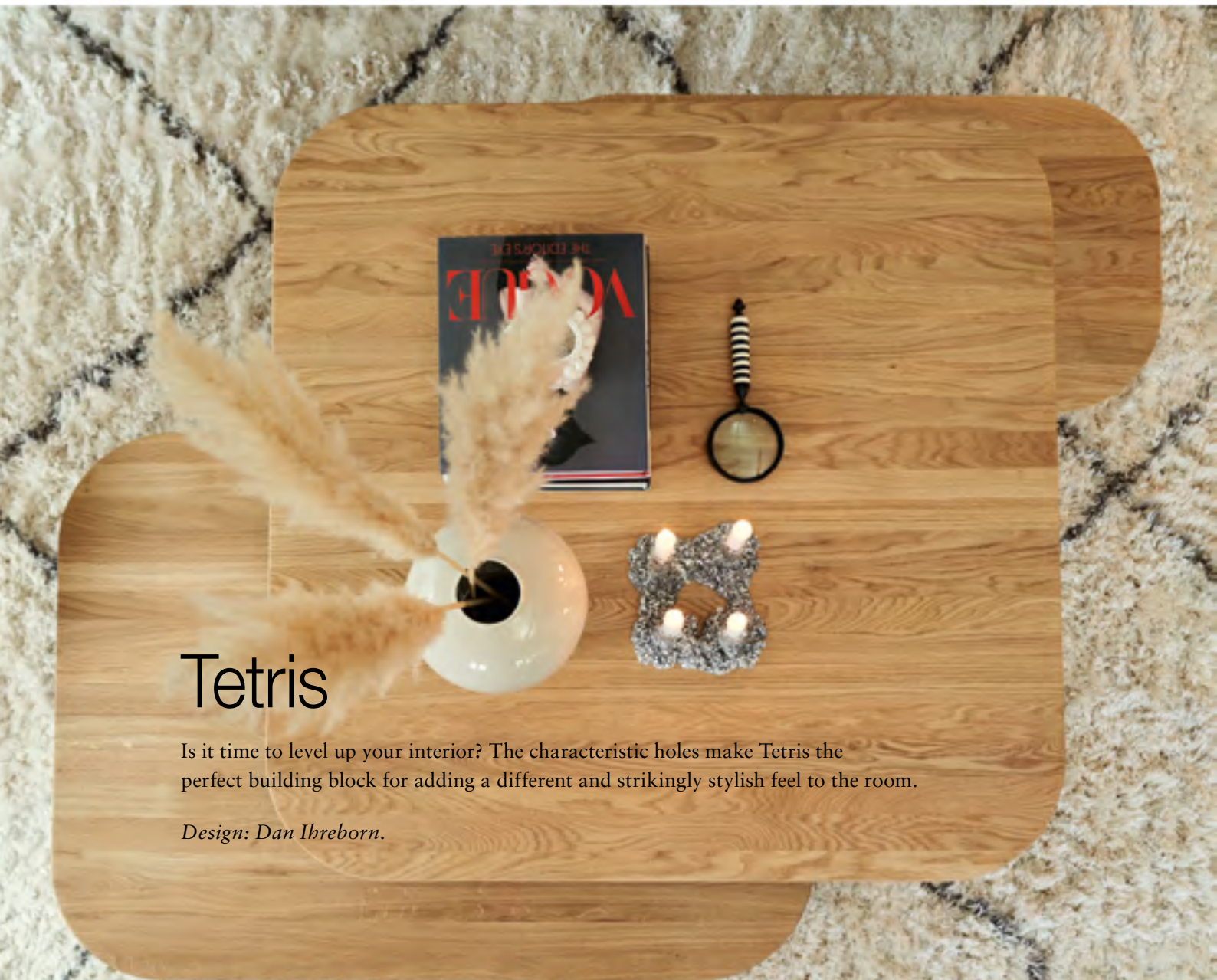


Space

Pardon the cliché, but for our Space table, less really is more. The light metal frame is available in black or white, and can hold a wood oak, white or black.

Design: Dan Ihreborn.





Tetris

Is it time to level up your interior? The characteristic holes make Tetris the perfect building block for adding a different and strikingly stylish feel to the room.

Design: Dan Ihreborn.





ACTONA
GROUP

sits.eu

facebook.com/sitseu