

A close-up photograph of a stack of numerous fabric swatches, showing a variety of colors and textures. The colors range from light beige and cream at the top to dark green and blue at the bottom. The textures vary from smooth to ribbed and plush. The text is overlaid on the upper portion of the stack.

SITS

FABRICS

2026



GROUP I

King	7
Star	9

GROUP II

Atropa	13
Elyot	15
Sneak	17
Spicy	19
Storm	21

GROUP III

Bloom	25
Caleido	27
Caleido Stampato	29
Candy	31
Classic Velvety	33
Heather	35
Moss	37
Rock	39
Stipa	41
Timber	43
Wildflower	45

GROUP IV

Laura	49
Lilac	51
Nori	53
Sky	55
Togo	57
Touch	59
Wind	61

EXCLUSIVE

Linen L007	65
Maple	67
Pine	69
Aniline	71



GROUP 1



KING

chenille

Technically advanced upholstery fabrics made of chenille fibres consisted of two simple twisted-together threads, between which are another cut fibres. Owing to that - fabric has a structure similar to that of velour or plush. A typical feature of the chenille - is an irregularity of upper structure, tiny irregular clearances, and downiness. It is a pile fabric and will flatten as a characteristic. For optimal appearance retention, regular light vacuuming or brushing with a soft brush is necessary.

STANDARD
polyester 100%

FLAME RETARDANT (FR)
polyester 100%

standard	version	flame retardant (FR)
I	price group	II
350	weight (g/m ²)	460
50 000	martindale abrasion resistance EN ISO 12947-2	50 000
4-5	martindale pilling resistance EN ISO 12947-2 (afetr 2000 rubs)	4-5
5	colour fastness to light EN ISO 12947-2	5
	care instruction	
washable	special features*	-



1 natural



2 beige



4 light grey



5 grey-beige



6 grey



7 light blue



8 light turquoise



10 black-white

There are possible shade differences between production series.

*Washable according to graphic instruction above.



STAR

flat woven

Upholstery fabrics manufactured from simple fibres, without hair, of rough natural texture creating a smooth, uniform layer.

STANDARD
polypropylene 100%

FLAME RETARDANT (FR)
polypropylene 100%

standard	version	flame retardant (FR)
1	price group	1
230	weight (g/m ²)	290
30 000	martindale abrasion resistance EN ISO 12947-2	30 000
4-5	martindale pilling resistance EN ISO 12947-2 (afetr 2000 rubs)	4-5
5	colour fastness to light EN ISO 12947-2	5
	care instruction	
-	special features*	-



1 natural



2 beige



3 grey-brown



4 light grey



5 grey



6 blue-grey



GROUP II



ATROPA

chenille

Technically advanced upholstery fabrics made of chenille fibres consisted of two simple twisted-together threads, between which are another cut fibres. Owing to that - fabric has a structure similar to that of velour or plush. A typical feature of the chenille - is an irregularity of upper structure, tiny irregular clearances, and downiness. It is a pile fabric and will flatten as a characteristic. For optimal appearance retention, regular light vacuuming or brushing with a soft brush is necessary.

STANDARD

acrylic 48%, polyester 41%, cotton 11%

FLAME RETARDANT (FR)

acrylic 48%, polyester 41%, cotton 11%

standard	version	flame retardant (FR)
II	price group	II
414	weight (g/m ²)	512
25 000	martindale abrasion resistance EN ISO 12947-2	25 000
3-4	martindale pilling resistance EN ISO 12947-2 (afetr 2000 rubs)	3-4
5	colour fastness to light EN ISO 12947-2	5
	care instruction	
washable	special features*	-



1 grey-beige 2 light grey 3 beige 4 mustard 5 orange



6 cognac 7 camel 8 khaki 9 dark blue 10 grey

* Washable according to graphic instruction.

There are possible shade differences between production series.



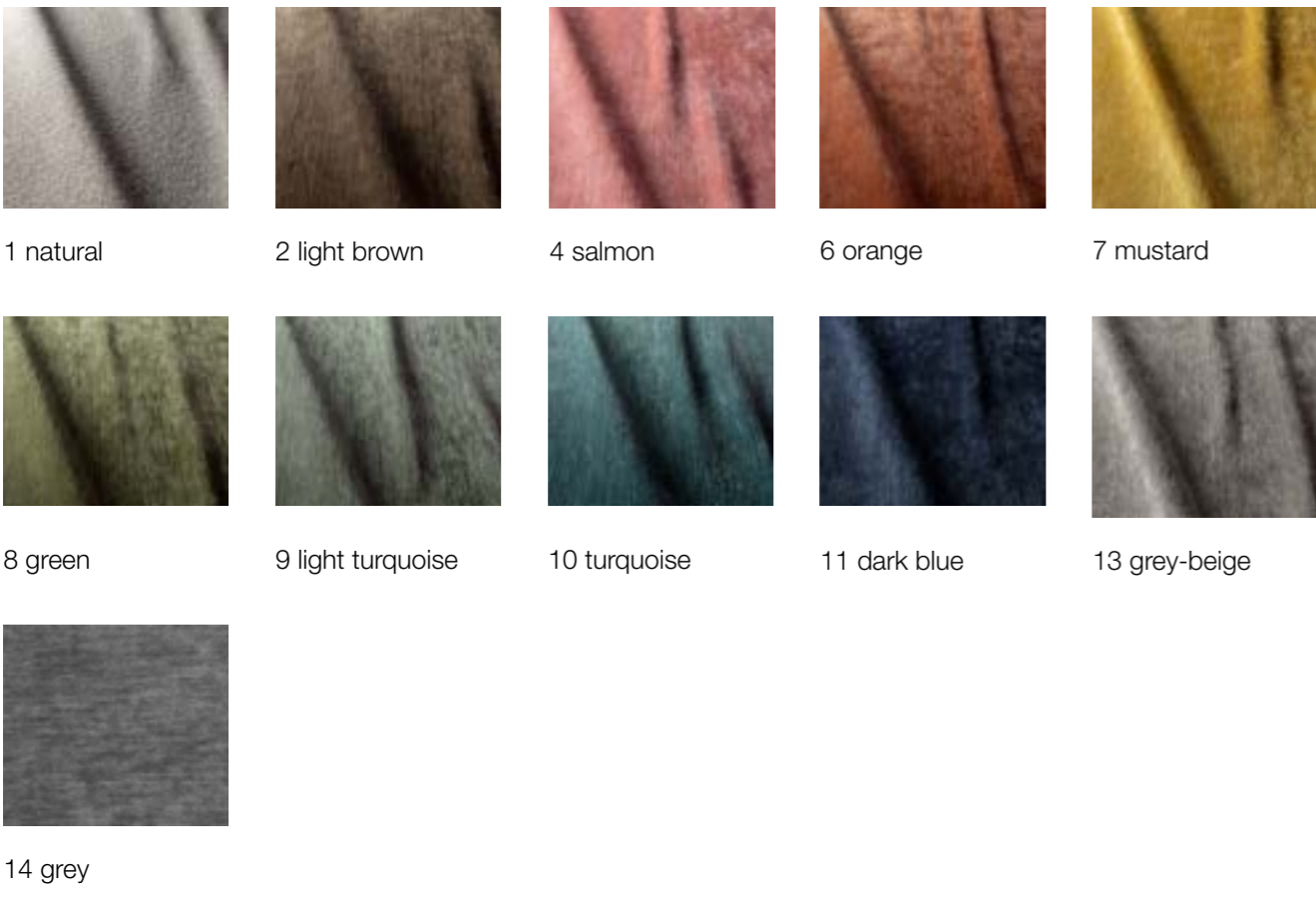
ELYOT

chenille

Technically advanced upholstery fabrics made of chenille fibres consisted of two simple twisted-together threads, between which are another cut fibres. Owing to that - fabric has a structure similar to that of velour or plush. A typical feature of the chenille - is an irregularity of upper structure, tiny irregular clearances, and downiness. It is a pile fabric and will flatten as a characteristic. For optimal appearance retention, regular light vacuuming or brushing with a soft brush is necessary.

STANDARD
acrylic 52%, polyester 41%, viscose 7%

FLAME RETARDANT (FR)
acrylic 52%, polyester 41%, viscose 7%



standard	version	flame retardant (FR)
II	price group	III
384	weight (g/m ²)	540
90 000	martindale abrasion resistance EN ISO 12947-2	90 000
4-5	martindale pilling resistance EN ISO 12947-2 (afetr 2000 rubs)	4-5
5	colour fastness to light EN ISO 12947-2	5
	care instruction	
washable	special features*	-

* Washable according to graphic instruction above.



SNEAK

chenille

Technically advanced upholstery fabrics made out of chenille fibres, consisted of two simple twisted-together threads - between which are another cut fibres. Owing to that - fabric has a structure similar to that of velour or plush. A typical feature for the chenille - is an irregularity of upper structure, tiny irregular clearances, and downiness. It is a pile fabric and will flatten as a characteristic. For optimal appearance retention, regular light vacuuming or brushing with a soft brush is necessary.

STANDARD
polyester 100%

FLAME RETARDANT (FR)
polyester 100%

standard	version	flame retardant (FR)
II	price group	III
370	weight (g/m ²)	370
38 000	martindale abrasion resistance EN ISO 12947-2	38 000
4-5	martindale pilling resistance EN ISO 12947-2 (afetr 2000 rubs)	4-5
4-5	colour fastness to light EN ISO 12947-2	4-5
	care instruction	
washable	special features*	washable



1 natural



2 grey-beige



3 light turquoise



4 light grey



5 grey



6 anthracite

There are possible shade differences between production series.

*Washable according to graphic instruction.



SPICY

chenille

Technically advanced upholstery fabrics made out of chenille fibres, consisted of two simple twisted-together threads - between which are another cut fibres. Owing to that - fabric has a structure similar to that of velour or plush. A typical feature for the chenille - is an irregularity of upper structure, tiny irregular clearances, and downiness. It is a pile fabric and will flatten as a characteristic. For optimal appearance retention, regular light vacuuming or brushing with a soft brush is necessary.

STANDARD
polyester 100%

FLAME RETARDANT (FR)
polyester 100%

standard	version	flame retardant (FR)
II	price group	III
530	weight (g/m ²)	630
>40 000	martindale abrasion resistance EN ISO 12947-2	>40 000
4	martindale pilling resistance EN ISO 12947-2 (afetr 2000 rubs)	4
>4	colour fastness to light EN ISO 12947-2	>4
	care instruction	
washable recycled	special features*	-



1 natural



2 light beige



3 warm beige



4 dusty pink



5 copper brown



6 mustard



7 olive green



8 espresso brown



9 grey



10 dark blue

There are possible shade differences between production series.

*Washable according to graphic instruction.
Recycled made by using recycled materials.



STORM

flat woven

Technically advanced upholstery fabrics made out of chenille fibres, consisted of two simple twisted-together threads - between which are another cut fibres. Owing to that - fabric has a structure similar to that of velour or plush. A typical feature for the chenille - is an irregularity of upper structure, tiny irregular clearances, and downiness. It is a pile fabric and will flatten as a characteristic. For optimal appearance retention, regular light vacuuming or brushing with a soft brush is necessary.

STANDARD
polyester 100%

FLAME RETARDANT (FR)
polyester 100%

standard	version	flame retardant (FR)
II	price group	II
790	weight (g/m ²)	890
90 000	martindale abrasion resistance EN ISO 12947-2	90 000
4	martindale pilling resistance EN ISO 12947-2 (afetr 2000 rubs)	4
5	colour fastness to light EN ISO 12947-2	5
	care instruction	
washable	special features*	washable



1 natural



2 light grey



3 grey



4 dark grey



GROUP III



BLOOM

chenille

Technically advanced upholstery fabrics made of chenille fibres consisted of two simple twisted-together threads, between which are another cut fibres. Owing to that - fabric has a structure similar to that of velour or plush. A typical feature of the chenille - is an irregularity of upper structure, tiny irregular clearances, and downiness. It is a pile fabric and will flatten as a characteristic. For optimal appearance retention, regular light vacuuming or brushing with a soft brush is necessary.

STANDARD
polyester 100%

FLAME RETARDANT (FR)
polyester 100%

standard	version	flame retardant (FR)
III	price group	IV
643	weight (g/m ²)	707
80 000	martindale abrasion resistance EN ISO 12947-2	80 000
4-5	martindale pilling resistance EN ISO 12947-2 (afetr 2000 rubs)	4-5
5	colour fastness to light EN ISO 12947-2	5
	care instruction	
washable	special features*	-



1 cream



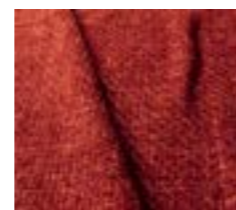
2 teddy brown



3 warm yellow



4 pale orange



5 warm red



6 green



7 blue



8 grey



9 midnight blue

There are possible shade differences between production series.

Washable according to graphic instruction.

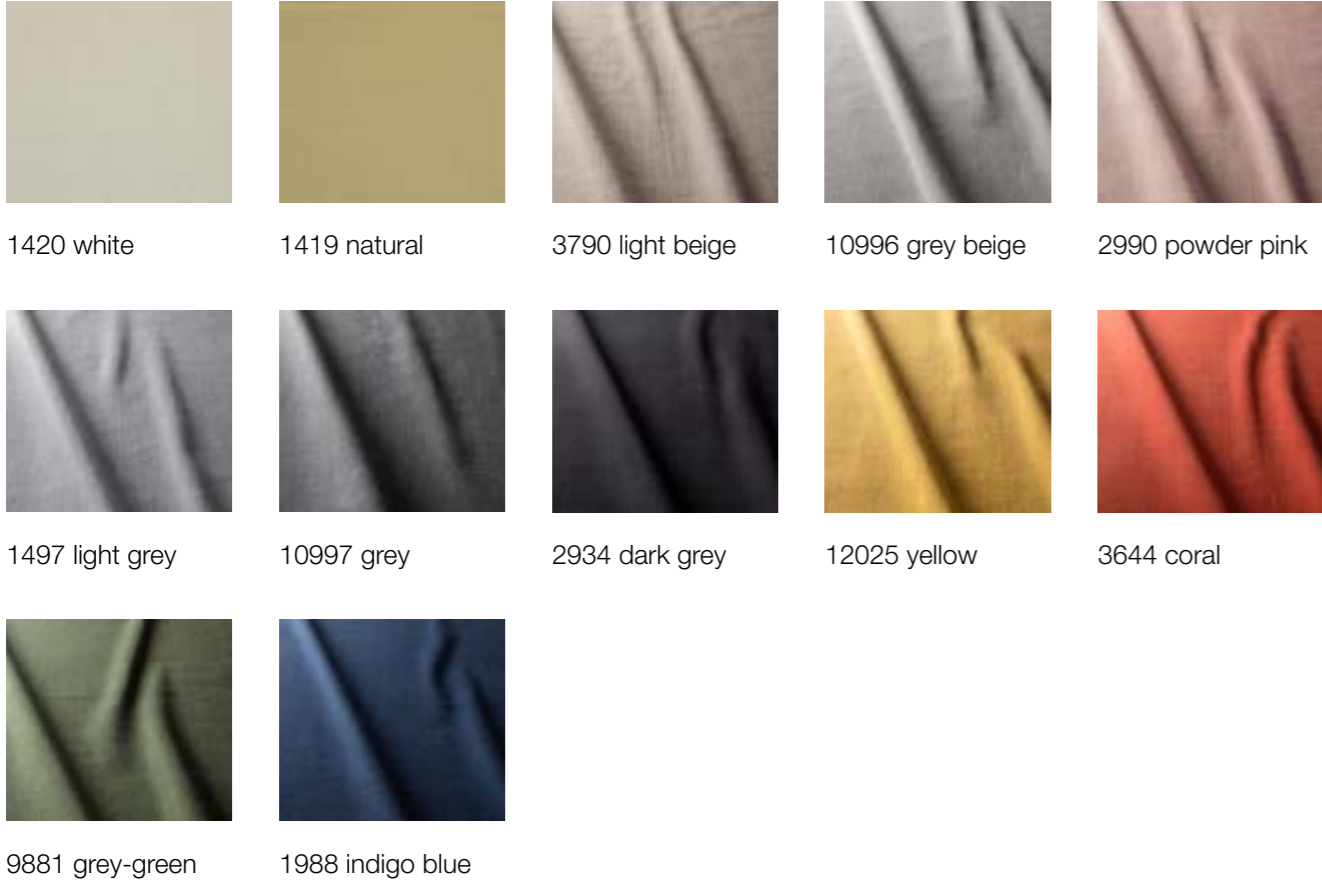


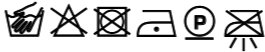
CALEIDO

smooth natural

Upholstery fabric manufactured from simple fibres, without hair, of rough natural texture, creating a smooth, uniform layer. It is made of linen, cotton, or viscose or a mixture of these fibres with a small number of synthetic ones.

COMPOSITION
cotton 63%, linen 37%



standard	version	flame retardant (FR)
III	price group	III
380	weight (g/m ²)	
32 500	martindale abrasion resistance EN ISO 12947-2	
4	martindale pilling resistance EN ISO 12947-2 (afetr 2000 rubs)	
4-5	colour fastness to light EN ISO 12947-2	
	care instruction	
washable natural	special features*	Meets the safety regulations by inclusion of a fire resistant interliner.

* **Washable** according to graphic instruction; washing only on the left side.
Natural more than 75% of natural fibres.

smooth natural

Upholstery fabric manufactured from simple fibres, without hair, of rough natural texture, creating a smooth, uniform layer. It is made of linen, cotton, or viscose or a mixture of these fibres with a small number of synthetic ones.

COMPOSITION
cotton 63%, linen 37%

standard	version	flame retardant (FR)
III	price group	III
380	weight (g/m ²)	
32 500	martindale abrasion resistance EN ISO 12947-2	
4	martindale pilling resistance EN ISO 12947-2 (afetr 2000 rubs)	
4-5	colour fastness to light EN ISO 12947-2	
	care instruction	
natural washable	special features*	Meets the safety regulations by inclusion of a fire resistant interliner.



*Natural – more than 75% of natural fibres.
Washable according to graphic instruction; washing only on the left side.



CANDY

chenille

Technically advanced upholstery fabrics made out of chenille fibres, consisted of two simple twisted-together threads - between which are another cut fibres. Owing to that - fabric has a structure similar to that of velour or plush. A typical feature for the chenille - is an irregularity of upper structure, tiny irregular clearances, and downiness. It is a pile fabric and will flatten as a characteristic. For optimal appearance retention, regular light vacuuming or brushing with a soft brush is necessary.

STANDARD

acrylic 44%, recycled polyester 20%, viscose 18%, polyester 12%, linen 6%

FLAME RETARDANT (FR)

acrylic 44%, recycled polyester 20%, viscose 18%, polyester 12%, linen 6%

standard	version	flame retardant (FR)
III	price group	IV
505	weight (g/m ²)	724
>50 000	martindale abrasion resistance EN ISO 12947-2	25 000
4	martindale pilling resistance EN ISO 12947-2 (afetr 2000 rubs)	4-5
5	colour fastness to light EN ISO 12947-2	5
	care instruction	
washable recycled	special features*	washable recycled



1 natural



2 light grey



3 blue



4 light turquoise



5 summer green



6 sunny yellow



7 light orange



8 coral pink

There are possible shade differences between production series.

* **Washable** according to graphic instruction.
Recycled made by using recycled materials.



CLASSIC VELVET

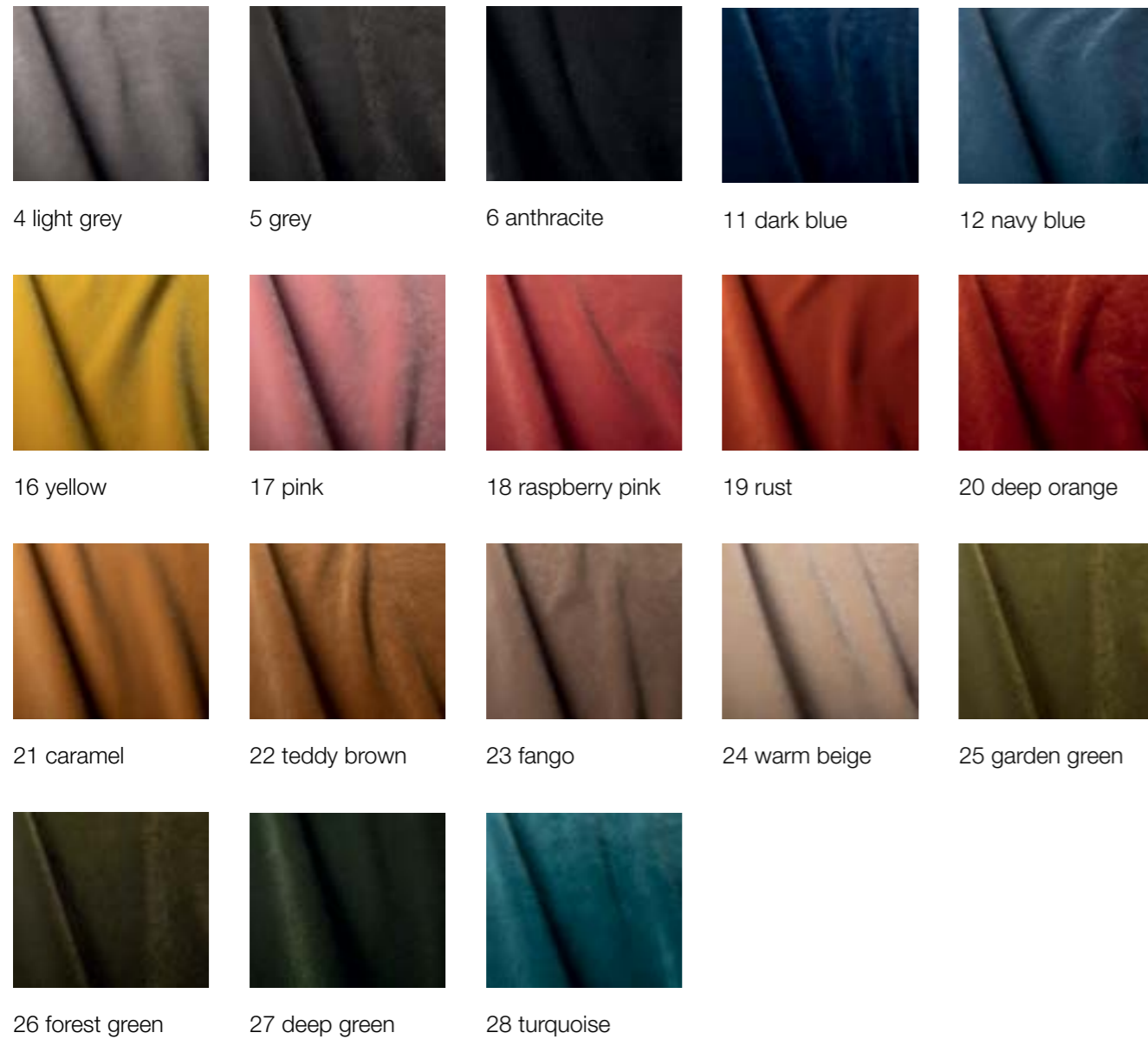


velours

Elegant upholstery fabrics are most frequently produced in manufacturing two-layer knitted fabric, intertwining the layers with fibres creating a tick mesh, and then cutting up both layers. In this way, each of the layers has a thick fleece. The most recognizable feature of velour is its very high strength - at the same time, it gives a pleasant touch feeling.

STANDARD
polyester 100%

FLAME RETARDANT (FR)
polyester 100%



standard	version	flame retardant (FR)
III	price group	IV
480	weight (g/m ²)	590
100 000	martindale abrasion resistance EN ISO 12947-2	100 000
4/5	martindale pilling resistance EN ISO 12947-2 (afetr 2000 rubs)	4/5
5	colour fastness to light EN ISO 12947-2	5
	care instruction	
washable	special features*	-

* Washable according to graphic instruction.

There are possible shade differences between production series.



HEATHER

bouclé

Bouclé is both a yarn and a fabric made from it. The yarn is made from length loops of similar size that range from tiny circlets to large curls. It is nubby fabric - to make bouclé, at least two strands are combined, with the tension on one strand being much looser than the other as being connected to its plies. Loose strands form loops; the other strand is an anchor for the previous one. Bouclé is also a name of the fabric produce from this type of yarn, especially fabric that maintains the looped appearance.

STANDARD

acrylic 64%, poliester 33%, viscose 3%

FLAME RETARDANT (FR)

acrylic 64%, poliester 33%, viscose 3%

standard	version	flame retardant (FR)
III	price group	IV
577	weight (g/m ²)	650
50 000	martindale abrasion resistance EN ISO 12947-2	50 000
4-5	martindale pilling resistance EN ISO 12947-2 (afetr 2000 rubs)	4-5
5	colour fastness to light EN ISO 12947-2	5
	care instruction	
washable	special features*	-



1 natural



2 light beige



3 beige



4 light brown



5 copper brown



6 olive brown



7 mustard green



8 steel grey

*Washable according to graphic instruction.

There are possible shade differences between production series.



MOSS

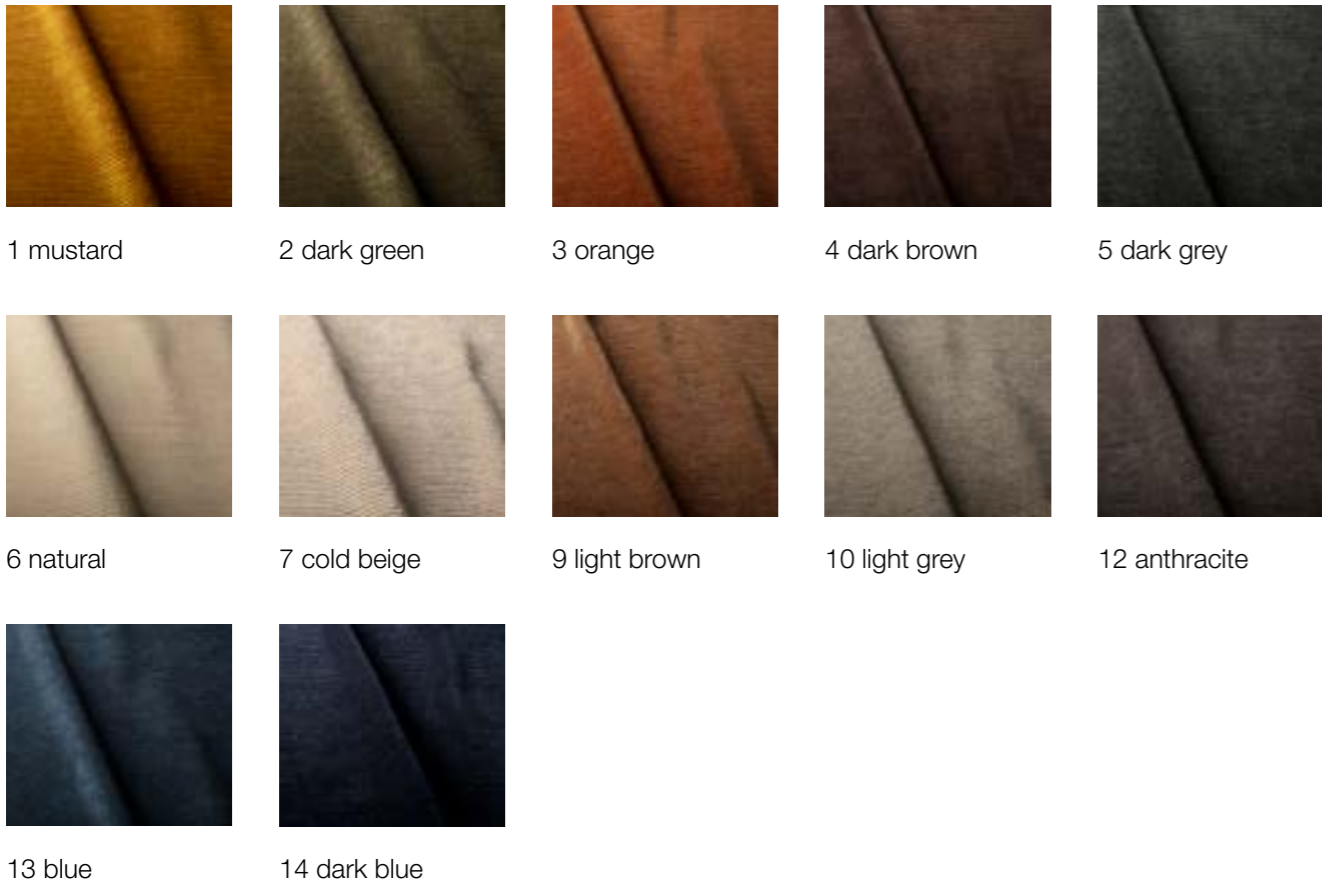
chenille

Technically advanced upholstery fabrics made of chenille fibres consisted of two simple twisted-together threads, between which are another cut fibres. Owing to that - fabric has a structure similar to that of velour or plush. A typical feature of the chenille - is an irregularity of upper structure, tiny irregular clearances, and downiness.

Corduroy is a fabric made with ribs. That fabric consists of three separate yarns woven together. The two primary yarns create a plain or a twill weave, and the third yarn intersperses into this weave in the filling direction, forming floats that pass over at least four warp yarns.

STANDARD
polyester 48%, acrylic 35%, wool 9%, viscose 8%

FLAME RETARDANT (FR)
polyester 47%, acrylic 36%, wool 9%, viscose 8%



1 mustard 2 dark green 3 orange 4 dark brown 5 dark grey
 6 natural 7 cold beige 9 light brown 10 light grey 12 anthracite
 13 blue 14 dark blue

standard	version	flame retardant (FR)
III	price group	IV
476	weight (g/m ²)	550
25 000	martindale abrasion resistance EN ISO 12947-2	25 000
4-5	martindale pilling resistance EN ISO 12947-2 (afetr 2000 rubs)	4-5
5	colour fastness to light EN ISO 12947-2	5
	care instruction	
washable	special features*	-

*Washable according to graphic instruction.



ROCK

flat woven

Upholstery fabrics manufactured from simple fibres, without hair, of rough natural texture creating a smooth, uniform layer.

STANDARD
rolefin 51 %, polyester 27%, acrylic 22%

FLAME RETARDANT (FR)
rolefin 51 %, polyester 27%, acrylic 22%

standard	version	flame retardant (FR)
III	price group	IV
550	weight (g/m ²)	740
35 000	martindale abrasion resistance EN ISO 12947-2	35 000
4	martindale pilling resistance EN ISO 12947-2 (afetr 2000 rubs)	4
5	colour fastness to light EN ISO 12947-2	5
	care instruction	
eco friendly washable recycled	special features*	eco friendly washable recycled



1 natural



2 light grey



3 beige



4 cool beige



5 brown



6 anthracite

Every sofa can save **250 liters** of water with **Rolefin**.

Rolefin is a textile-recycled olefin yarn developed to produce furniture fabrics a Zero Water Consumption during the production process. The yarn/fabric is converted from pre-consumer textile wastes consisting of by-product materials from fiber, yarn and fabrics.

ROLEFIN has all the FOLLOWING features:

- Zero Water Consumption During Production Processes
- Made of Textile Wastes- Recycled
- Recyclable (up to 7 times)
- Contains No Harmful Chemicals
- Energy Efficient
- Low CO Footprint 2
- Certified by Recycled Claim Standard 2.0



***Eco friendly** All materials are biodegradable, recyclable. All waste are recycled. Energy and water consumption are minimised. No toxic products during production.
Washable according to graphic instruction.
Recycled recycled materials



STIPA

chenille

Technically advanced upholstery fabrics made of chenille fibres consisted of two simple twisted-together threads, between which are another cut fibres. Owing to that - fabric has a structure similar to that of velour or plush. A typical feature of the chenille - is an irregularity of upper structure, tiny irregular clearances, and downiness. It is a pile fabric and will flatten as a characteristic. For optimal appearance retention, regular light vacuuming or brushing with a soft brush is necessary.

STANDARD
polyester 100%

FLAME RETARDANT (FR)
polyester 100%

standard	version	flame retardant (FR)
III	price group	IV
445	weight (g/m ²)	530
100 000	martindale abrasion resistance EN ISO 12947-2	100 000
4-5	martindale pilling resistance EN ISO 12947-2 (afetr 2000 rubs)	3-4
>5	colour fastness to light EN ISO 12947-2	5
	care instruction	
washable	special features*	-



1 brown



2 beige



3 light beige



4 natural



6 grey



7 steel



9 green

There are possible shade differences between production series.

*Washable according to graphic instruction.



TIMBER

chenille

Technically advanced upholstery fabrics made of chenille fibres consisted of two simple twisted-together threads, between which are another cut fibres. Owing to that - fabric has a structure similar to that of velour or plush. A typical feature of the chenille - is an irregularity of upper structure, tiny irregular clearances, and downiness. It is a pile fabric and will flatten as a characteristic. For optimal appearance retention, regular light vacuuming or brushing with a soft brush is necessary.

STANDARD
polyester 86%, cotton 14%

FLAME RETARDANT (FR)
polyester 86%, cotton 14%

standard	version	flame retardant (FR)
III	price group	III
358	weight (g/m ²)	396
80 000	martindale abrasion resistance EN ISO 12947-2	80 000
4	martindale pilling resistance EN ISO 12947-2 (afetr 2000 rubs)	4
5	colour fastness to light EN ISO 12947-2	5
	care instruction	
washable easy to clean	special features*	washable



There are possible shade differences between production series.

***Easy to clean** an easy way to remove a stain - suffice rub with a damp cloth and soapy water.
Washable according to graphic instruction.



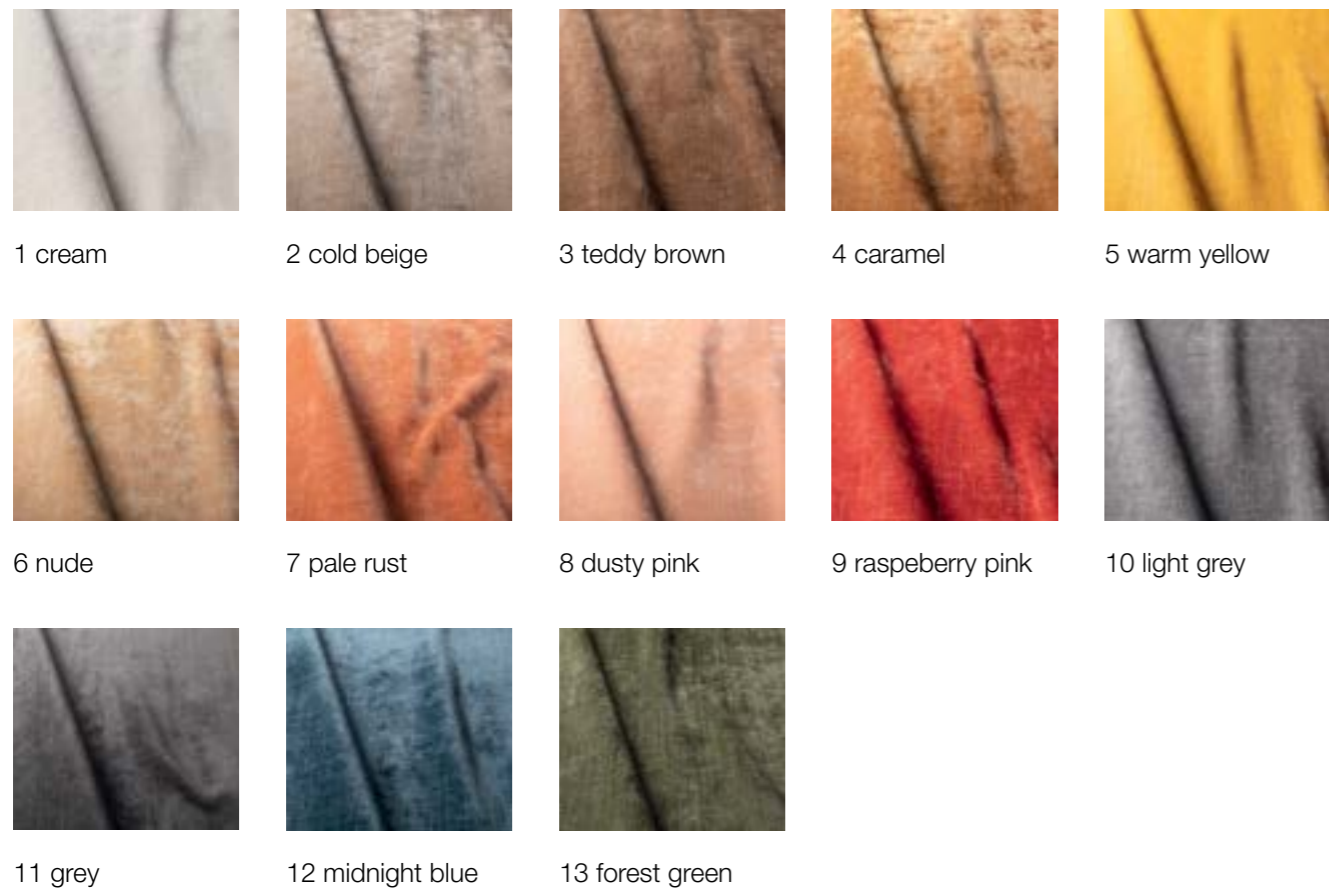
WILDFLOWER

chenille

Technically advanced upholstery fabrics made of chenille fibres consisted of two simple twisted-together threads, between which are another cut fibres. Owing to that - fabric has a structure similar to that of velour or plush. A typical feature of the chenille - is an irregularity of upper structure, tiny irregular clearances, and downiness. It is a pile fabric and will flatten as a characteristic. For optimal appearance retention, regular light vacuuming or brushing with a soft brush is necessary.

STANDARD
polyester 93%, linen 7%

FLAME RETARDANT (FR)
polyester 93%, linen 7%

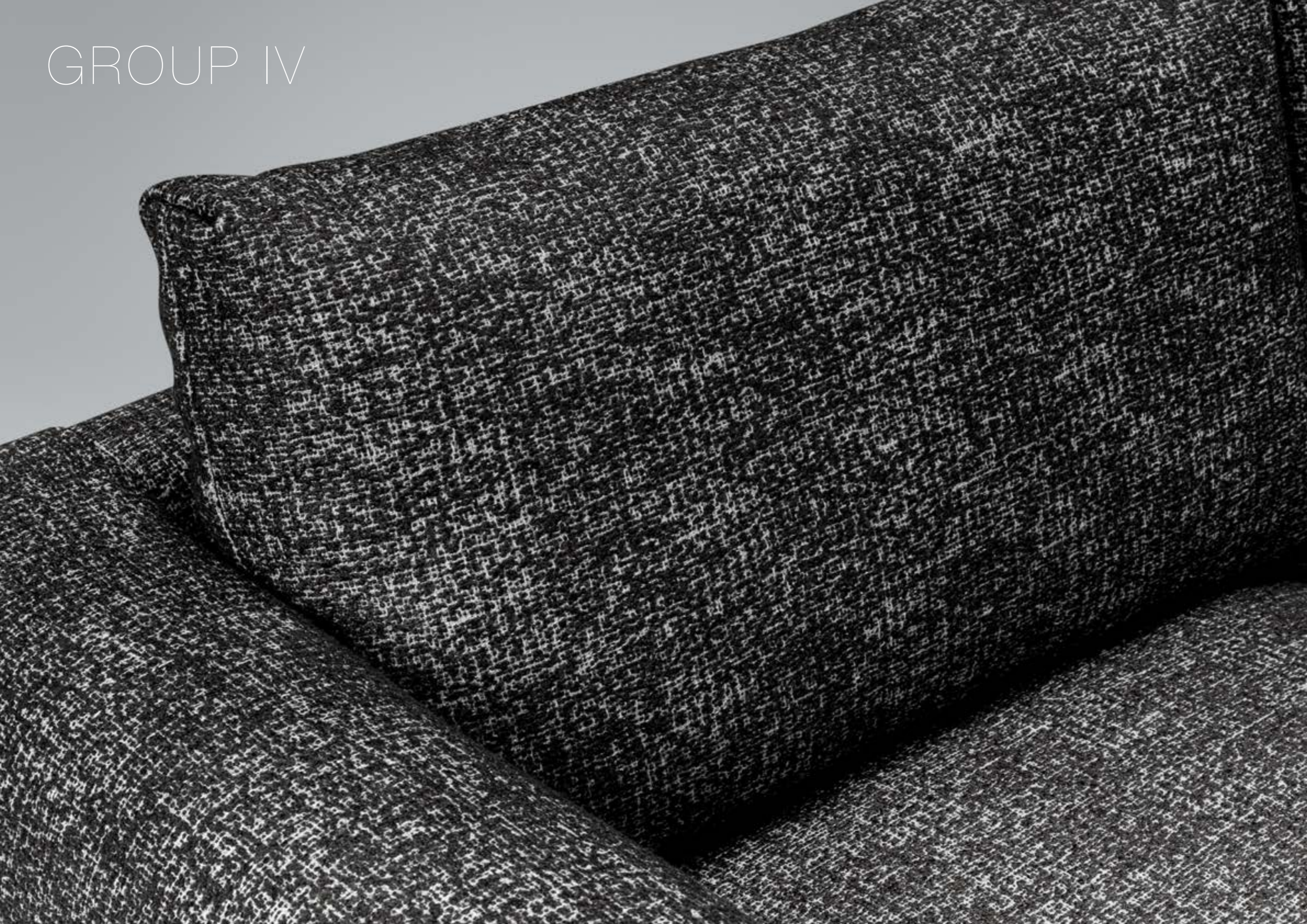


1 cream 2 cold beige 3 teddy brown 4 caramel 5 warm yellow
6 nude 7 pale rust 8 dusty pink 9 raspeberry pink 10 light grey
11 grey 12 midnight blue 13 forest green

standard	version	flame retardant (FR)
III	price group	IV
464	weight (g/m ²)	557
25 000	martindale abrasion resistance EN ISO 12947-2	25 000
4	martindale pilling resistance EN ISO 12947-2 (afetr 2000 rubs)	4
4	colour fastness to light EN ISO 12947-2	4
	care instruction	
washable	special features*	-

*Washable according to graphic instruction.

GROUP IV





LAURA

flat woven

Upholstery fabrics manufactured from simple fibres, without hair, of rough natural texture creating a smooth, uniform layer.

STANDARD
acrylic 44%, recycled polyester 18%, rolefin 18%, viscose 13%, linen 5%, polyester 2%

FLAME RETARDANT (FR)
acrylic 44%, recycled polyester 18%, rolefin 18%, viscose 13%, linen 5%, polyester 2%

standard	version	flame retardant (FR)
IV	price group	IV
564	weight (g/m ²)	664
35 000	martindale abrasion resistance EN ISO 12947-2	35 000
4	martindale pilling resistance EN ISO 12947-2 (afetr 2000 rubs)	4
5/6	colour fastness to light EN ISO 12947-2	5/6
	care instruction	
eco friendly washable recycled	special features*	eco friendly recycled



1 natural



2 beige



4 black

***Eco friendly** All materials are biodegradable, recyclable. All waste are recycled. Energy and water consumption are minimised. No toxic products during production.
Washable according to graphic instruction.
Recycled recycled materials



LILAC

chenille

Technically advanced upholstery fabrics made of chenille fibres consisted of two simple twisted-together threads, between which are another cut fibres. Owing to that - fabric has a structure similar to that of velour or plush. A typical feature of the chenille - is an irregularity of upper structure, tiny irregular clearances, and downiness. It is a pile fabric and will flatten as a characteristic. For optimal appearance retention, regular light vacuuming or brushing with a soft brush is necessary.

STANDARD

polyester 73%, modacrylic 19%, cotton 8%

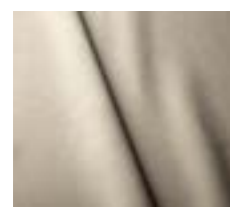
FLAME RETARDANT (FR)

polyester 73%, modacrylic 19%, cotton 8%



The fabric without FR back coating.

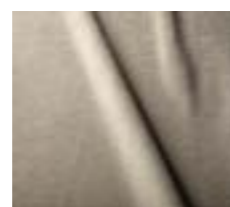
standard = FR	version	flame retardant (FR)
IV	price group	IV
421	weight (g/m ²)	421
60 000	martindale abrasion resistance EN ISO 12947-2	60 000
5	martindale pilling resistance EN ISO 12947-2 (afetr 2000 rubs)	5
5	colour fastness to light EN ISO 12947-2	5
	care instruction	
easy to clean eco friendly washable safe front	special features*	easy to clean eco friendly washable safe front



1 natural



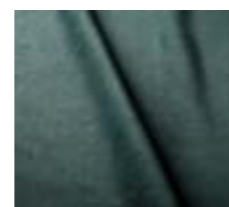
2 beige



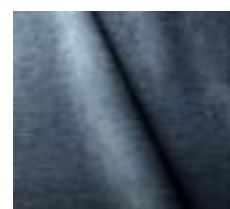
3 light grey



7 dark green



8 turquoise



9 blue



10 grey

There are possible shade differences between production series.

Fabric you can clean with just water.

Enjoy the everyday comfort provided by Aquaclean® Technology. Now you can get rid of small stains such as wine, coffee and food without having to wash with soap or detergent. Aquaclean® Technology is so effective that even stains from most marker pens comes off with just water!

Regular maintenance instructions.

For normal sofa maintenance we recommend that you vacuum the entire surface area regularly. You can use a normal home vacuum cleaner with a brush fitting.



*Washable according to graphic instruction

Easy to clean an easy way to remove a stain - suffice rub with a damp cloth and soapy water.

Eco friendly all materials are biodegradable, recyclable. All waste are recycled. Energy and water consumption are minimised. No toxic products during production.

Safe front protects against viruses and bacteria.

Water cleaning in three simple steps:



Remove any excess residue on the upholstery by careful scraping of the stain surface. (Make sure not to use a sharp object to prevent ripping the fabric).



Apply water over the stain, either directly or using a damp cloth. Wait a few seconds.



Press down over the stain with a damp cloth and rub gently over the fabric in circular movements. If the stain does not come off completely, repeat the process as required.



NORI

chenille

Technically advanced upholstery fabrics made of chenille fibres consisted of two simple twisted-together threads, between which are another cut fibres. Owing to that - fabric has a structure similar to that of velour or plush. A typical feature of the chenille - is an irregularity of upper structure, tiny irregular clearances, and downiness.

It is a pile fabric and will flatten as a characteristic. For optimal appearance retention, regular light vacuuming or brushing with a soft brush is necessary.

STANDARD

recycled polyester 64%, seaqual upcycled yarn 36%

FLAME RETARDANT (FR)

recycled polyester 64%, seaqual upcycled yarn 36%

standard	version	flame retardant (FR)
IV	price group	IV
503	weight (g/m ²)	600
50 000	martindale abrasion resistance EN ISO 12947-2	50 000
4	martindale pilling resistance EN ISO 12947-2 (afetr 2000 rubs)	4
5	colour fastness to light EN ISO 12947-2	5
	care instruction	
easy to clean eco friendly washable recycled	special features*	easy to clean eco friendly recycled



1 natural



2 light grey



3 grey-beige



4 light turquoise



5 turquoise



6 ocean blue



7 green

There are possible shade differences between production series.

The beauty of, sustainable, everyday products made from upcycled marine plastic.

SEAQUAL INITIATIVE works with NGOs, fishermen, authorities and local communities to help clean our oceans. Marine litter from our beaches, ocean floor and surface, rivers and estuaries, is collected by clean-up programs. It is then sorted into different material types and the plastic portion is cleaned and transformed into Upcycled Marine Plastic. Environmentally conscious brands and manufacturers then transform this new, fully- traceable raw material into inspiring sustainable products for every aspect of our lives. Consumer purchasing power is one of the most powerful tools for change. In choosing products containing Upcycled Marine Plastic, you are helping to clean our oceans.



SEAQUAL
INITIATIVE

TOGETHER FOR A CLEAN OCEAN.

***Easy to clean** an easy way to remove a stain - suffice rub with a damp cloth and soapy water.
Eco friendly all materials are biodegradable, recyclable. All waste are recycled. Energy and water consumption are minimised. No toxic products during production.
Washable according to graphic instruction.
Recycled recycled materials.



SKY

chenille

Technically advanced upholstery fabrics made of chenille fibres consisted of two simple twisted-together threads, between which are another cut fibres. Owing to that - fabric has a structure similar to that of velour or plush. A typical feature of the chenille - is an irregularity of upper structure, tiny irregular clearances, and downiness.

It is a pile fabric and will flatten as a characteristic. For optimal appearance retention, regular light vacuuming or brushing with a soft brush is necessary.

STANDARD

recycled polyester 94%, recycled cotton 6%



FLAME RETARDANT (FR)

recycled polyester 94%, recycled cotton 6%



standard	version	flame retardant (FR)
IV	price group	IV
697	weight (g/m ²)	735
>100 000	martindale abrasion resistance EN ISO 12947-2	>100 000
5	martindale pilling resistance EN ISO 12947-2 (afetr 2000 rubs)	5
5	colour fastness to light EN ISO 12947-2	5
	care instruction	
washable eco friendly recycled easy care	special features*	eco friendly recycled easy care

SKY is part of our greencare range:
100% RECYCLED and **recyclable** fabrics.

SKY is made of 100% recycled waste, including upcycled cotton from garments and recycled PET from waste. Recycled PET is converted into yarns. This way we create this eco-friendly upholstery fabric. Ultimately these recycled yarns are transformed into soft, beautiful, recycled fabrics.

from PET to fabric 170 x =

1 **PET bottles**
Post-consumer PET bottles are collected from the ocean by fishermen or originate from different households.

2 **Flakes**
Those used PRT bottles are sorted by color and then transformed into flakes.

3 **Pellets**
Once the flakes are sorted, they are melted to pellets.

4 **Yarn**
Next in this recycling process, these pellets are spun into yarn.

5 **Fabric**
Here is where we step in create our ecological Greencare fabrics from recycled yarn.



1 off white



2 light grey



3 greige



4 gold beige



5 anthracite



6 blue



7 green

There are possible shade differences between production series.

***Easy to clean** an easy way to remove a stain - suffice rub with a damp cloth and soapy water.

Eco friendly all materials are biodegradable, recyclable. All waste are recycled. Energy and water consumption are minimised. No toxic products during production.

Washable according to graphic instruction.

Recycled recycled materials.



TOGO

jacquards

It is a fabric with woven patterns manufactured using a particular machine that allows controlling many threads separately, which means diversifying multicoloured patterns on a large surface can be created.

STANDARD

polyester 39%, acrylic 39%, cotton 14%, wool 8%

FLAME RETARDANT (FR)

polyester 39%, acrylic 39%, cotton 14%, wool 8%

standard	version	flame retardant (FR)
IV	price group	IV
548	weight (g/m ²)	685
35 000	martindale abrasion resistance EN ISO 12947-2	35 000
4	martindale pilling resistance EN ISO 12947-2 (afetr 2000 rubs)	4
5	colour fastness to light EN ISO 12947-2	5
	care instruction	
easy to clean washable	special features*	-



1 natural



2 beige



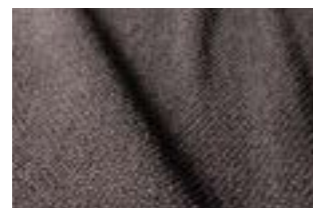
3 light brown



4 silver



5 turquoise



6 grey-brown



7 dark grey

There are possible shade differences between production series.

***Easy to clean** an easy way to remove a stain - suffice rub with a damp cloth and soapy water.

Eco friendly all materials are biodegradable, recyclable. All waste are recycled. Energy and water consumption are minimised. No toxic products during production.

Washable according to graphic instruction.



TOUCH leather

Leather has specific features: such as texture, variations of hues, slight scratches, scars, pricks, and other marks that appeared before the process of tanning, which proves its natural origin. Furniture leathers are available in a few sorts that differ one from another, with thickness, finishing method, softness, and texture, which is palpable.

REGULAR USE OF LEATHER FURNITURE

A natural process that accompanies the use of leather furniture is the appearance of folds, creases, and shining. An absolutely natural feature is the folds of back and seat pads. This process depends upon the insensitivity and quality of furniture use. It is recommendable to use all seats as evenly as possible to minimise the effects of that process.

LEATHER PROTECTION

Leather protection long-lasting good appearance of a piece of leather furniture depends on the conditions in which furniture is using. What negatively influences the leather is high temperature, dry air, and direct exposure to harsh sunbeams. Such conditions are bound to shorten the life span of leather upholstery. The minimum distance between a piece of furniture and a source of heat should be 30 cm.

LEATHER MAINTENANCE AND CLEANING

Leather furniture requires regular care. The method and frequency of cleaning, maintenance, and using intensity depend on the degree of soil. At least once per 6 months leather surface needs to be cleaned with a special preparation or with water and soft potash soap. It also needs to be maintained with a dedicated agent designed for leather care. Proper care and correct usage extend its perfect looks for many, many years.



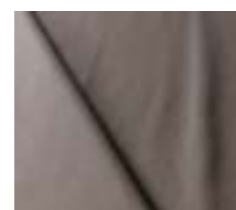
1 light beige



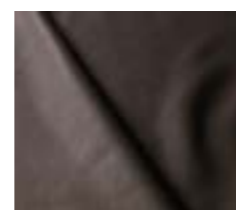
2 white



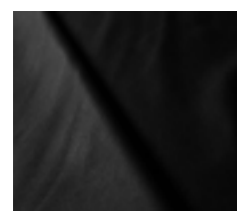
3 grey-beige



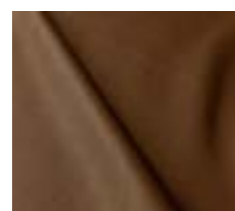
4 stone



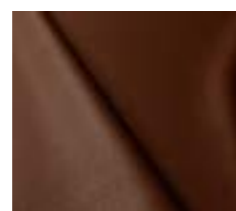
5 dark grey



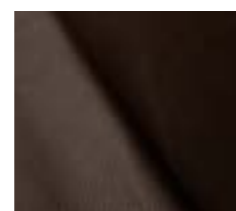
6 black



7 brown



8 cognac



9 dark brown

There are possible shade differences between production series.


WIND

smooth natural

Upholstery fabric manufactured from simple fibres, without hair, of rough natural texture, creating a smooth, uniform layer. It is made of linen, cotton, or viscose or a mixture of these fibres with a small number of synthetic ones.

STANDARD

linen 50%, cotton 38%, viscose 8%, other 4%

standard	version	flame retardant (FR)
IV	price group	IV
403	weight (g/m ²)	
>30 000	martindale abrasion resistance EN ISO 12947-2	
4/5	martindale pilling resistance EN ISO 12947-2 (afetr 2000 rubs)	
4	colour fastness to light EN ISO 12947-2	
	care instruction	
natural washable	special features*	Meets the safety regulations by inclusion of a fire resistant interliner.



1 off-white



2 flax



3 beige



4 light brown



5 black



6 grey

There are possible shade differences between production series.

*Natural – more than 75% of natural fibres.

Washable according to graphic instruction; washing only on the left side.



EXCLUSIVE



LINEN L007


smooth natural

Upholstery fabric manufactured from simple fibres, without hair, of rough natural texture, creating a smooth, uniform layer. It is made of linen, cotton, or viscose or a mixture of these fibres with a small number of synthetic ones.

COMPOSITION
linen 100%



standard

weight (g/m ²)	600
martindale abrasion resistance EN ISO 12947-2	>20 000
martindale pilling resistance EN ISO 12947-2 (afetr 2000 rubs)	4
colour fastness to light EN ISO 12947-2	4
care instruction	
special features*	washable natural



1 natural



2 flax



3 beige



4 olive



5 grey



6 graphite

There are possible shade differences between production series.

*Eco friendly all materials are biodegradable, recyclable. All waste are recycled. Energy and water consumption are minimised. No toxic products during production.
Washable according to graphic instruction.
Natural – more than 75% of natural fibres.




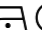



MAPLE

jacquards

Upholstery fabric manufactured from simple fibres, without hair, of rough natural texture, creating a smooth, uniform layer. It is made of polyester, acryl, polyamide, acetate, or a mixture of these fibres with natural ones.

COMPOSITION
acrylic 100%

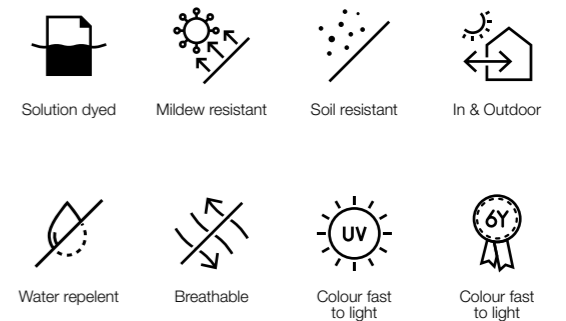
standard	
weight (g/m ²)	480
martindale abrasion resistance EN ISO 12947-2	30 000
martindale pilling resistance EN ISO 12947-2 (afetr 2000 rubs)	4-5
colour fastness to light EN ISO 12947-2 EN ISO 105 B04	7/8 blue scale 4/5 after 1000 hour of exposure on the grey scale
care instruction	    
special features*	washable outdoor

Seamless comfort for both **indoor and outdoor** environments.

The new and innovative Tempotest Home® LS bre allows for previously unseen performance and top-quality fabrics that are aesthetic and functional for both INDOOR and OUTDOOR environments.

Thanks to the innovative Teflon® Extreme finishing, Tempotest Home® LS fabrics are water/oil repellent, resistant to mould and stains, salt and fading due to solar radiation. Tempotest Home® LS fabrics are OEKO-TEX® certified. The fabrics produced with the new Tempotest Home® LS fibre are recognised for their high level of softness and appearance that is very similar to natural fibre products. These are characteristics and properties, never before achieved in outdoor fabrics.

Fabric features:



Warranty

Tempotest Home LS fabrics are guaranteed 6 years. The limited warranty only covers loss of colour due to normal exposure to solar radiation and normal weather conditions in general.



*Washable according to graphic instruction.



1 off-white



2 light turquoise



3 beige



4 grey-beige



5 grey

There are possible shade differences between production series.



PINE

jacquards

It is a fabric with woven patterns manufactured using a particular machine that allows controlling many threads separately, which means diversifying multicoloured patterns on a large surface can be created.

COMPOSITION
polypropylene 100%

standard	
weight (g/m ²)	528
martindale abrasion resistance EN ISO 12947-2	40 000
martindale pilling resistance EN ISO 12947-2 (afetr 2000 rubs)	3-4
colour fastness to light EN ISO 12947-2	8
care instruction	
special features*	washable easy to clean outdoor

A worry free care for outdoor furniture.

Enjoy the relaxed luxury of garden, pool-side and outdoor furniture that are just as easy to love as they are to keep clean. It feels great to have a drink, a snack or a swim in the sun, knowing that your furniture are protected by modern textiles that keep them in "ship-shape". With Easy Care Outdoor® fabrics life outside simply becomes easy and worry free for many years to come!



Easy Care

Quick and easy removal of common household stains using just water and mild soap. (Brush off loose dirt first).



Water repellent

Easycare outdoor fabrics allow water to pass through them which ensures rapid drying.



Strong but Soft

- High resistance to wear and tear
- High abrasion
- Soft touch
- Pilling-resistant



Mildew resistant

Our fabrics are resistant to fungus. It is an intrinsic property of the yarns we use.



In & Outdoor

Our modern textiles are top of the line in terms of look and feel and can be used in- and outside the house.



Colour fast to light

Our fabrics meet the highest quality standards regarding fading due to UV rays. They are colourfast to chlorine water, salty water and sweat. We provide 5 year warranty on the fabric against fading from sunlight and UV rays.

Easycare
Outdoor.

DEVELOPED IN BELGIUM



1 natural



2 grey-beige



3 grey



4 light turquoise

There are possible shade differences between production series.

*Washable according to graphic instruction.
Easy to clean an easy way to remove a stain - suffice rub with a damp cloth and soapy water.



ANILINE leather

Characteristic Pure Aniline is doubtlessly one of the softest leathers to the touch. It owes that feature to the finest selection of raw hides. It is a very exclusive product - only about 5% of upholstered furniture sold today is in it. This leather naturally breaths well - what makes even sitting for extended periods is comfortable from a touch and temperature perspective.

Aniline leather is the most natural leather, with the unique surface characteristics of the hide remaining visible. It is coloured only with dye and not with a surface coating of polymer and pigment. Furthermore, applying the colour leather process is as follows: the dye penetrating the leather and extending beyond the surface into the leather. The stains using in that process are clear and free from chemicals that allow the grain structure of the leather to be well visible. These dyes show the natural texture of the material. Unfortunately, they do not protect the leather from damages. These hides will exhibit some natural features, such as healed scars, scratches, neck and belly wrinkles, which gives them an original look. There are colour differences - between the swatches to the very same leather - it is because leather is a natural product and will absorb dyes differently within the hide and from hide to hide. This leather will develop a rich patina of wealth over time. Additionally, it will fade with prolonged exposure to sunlight. Due to the natural character of the leather, it is more exposed to dirt and stains - to prevent that process, you should regularly wipe it.

Regular use of leather furniture A natural process that accompanies using leather furniture is the appearance of folds, creases, and shining. An absolutely natural feature is the folds of back and seat pads. This process depends upon the insensitivity and quality of furniture use. It is recommendable to use all seats as evenly as possible to minimise the effects of that process.

Leather protection The long-lasting good appearance of a piece of leather furniture depends on the conditions in which furniture is using. What negatively influences the leather is high temperature, dry air, and direct exposure to harsh sunbeams. Such conditions are bound to shorten the life span of leather upholstery. The minimum distance between a piece of furniture and a source of heat should be 30 cm.



1 latte



2 cognac



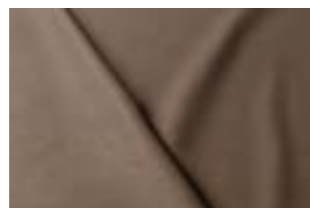
3 dark brown



4 natural



5 sand



6 opal



7 grey



8 black

There are possible shade differences between production series.

STANDARD VERSION

FABRIC	COLOR	CARE INSTRUCTION	MARTIN-DALE	PRICE GROUP	CERTIFICATE
King	1 natural, 2 beige, 4 l.grey, 5 grey-beige, 6 grey, 7 l.blue, 8 l.turquoise, 10 black-white		50 000	I	
Star	1 natural, 2 beige, 3 grey-brown, 4 light grey, 5 grey, 6 blue-grey		30 000	I	
Atropa	1 grey-beige, 2 l.grey, 3 beige, 4 mustard, 5 orange, 6 cognac, 7 camel, 8 khaki, 9 d.blue, 10 grey		25 000	II	
Elyot	1 natural, 2 l.brown, 4 salmon, 6 orange, 7 mustard, 8 green, 9 l.turquoise, 10 turquoise, 11 d.blue, 13 grey-beige, 14 grey		90 000	II	
Sneak	1 natural, 2 grey-beige, 3 l.turqoise, 4 l.grey, 5 grey, 6 anthracite		38 000	II	
Spicy	1 natural, 2 l.beige, 3 warm beige, 4 dusty pink, 5 copper brown, 6 mustard, 7 olive green, 8 espresso brown, 9 grey, 10 d.blue		>40 000	II	
Storm	1 natural, 2 l.grey, 3 grey, 4 d.grey		90 000	II	
Bloom	1 cream, 2 teddy brown, 3 warm yellow, 4 pale orange, 5 warm red, 6 green, 7 blue, 8 grey, 9 midnight blue		80 000	III	
Caleido	1420 white, 1419 natural, 3790 l.beige, 10996 grey-beige, 2990 powder pink, 1497 l.grey, 10997 grey, 2934 d.grey, 12025 yellow, 3644 coral, 9881 grey-green, 1988 indygo blue		32 500	III	
Caleido Stampato	1 natural, 2 beige, 4 cool beige, 6 olive, 7 turquoise, 8 l.blue, 9 d.blue, 10 steel, 11 grey-brown, 12 grey-beige		32 500	III	
Candy	1 natural, 2 l.grey, 3 blue, 4 l.turquoise, 5 summer green, 6 sunny yellow, 7 l.orange, 8 coral pink		>50 000	III	
Classic Velvet	4 l.grey, 5 grey, 6 anthracite, 11 d.blue, 12 navy blue, 16 yellow, 17 pink, 18 raspberry pink, 21 caramel, 22 teddy brown, 19 rust, 20 deep orange, 23 fango, 24 warm beige, 25 garden green, 26 forest green, 27 deep green, 28 turquoise,		100 000	III	
Heather	1 natural, 2 l.beige, 3 beige, 4 l.brown, 5 copper brown, 6 olive brown, 7 mustard green, 8 steel grey		50 000	III	
Moss	1 mustard, 2 d.green, 3 orange, 4 d.brown, 5 d.grey, 6 natural, 7 cold beige, 9 l.brown, 10 l.grey, 12 anthracite, 13 blue, 14 d.blue		25 000	III	
Rock	1 natural, 2 l.grey, 3 beige, 4 cool beige, 5 brown, 6 anthracite		35 000	III	
Stipa	1 brown, 2 beige, 3 l.beige, 4 natural, 6 grey, 7 steel, 9 green		100 000	III	
Timber	1 l.beige, 3 grey brown, 4 greige, 5 ocean blue, 6 cream, 7 soft brown, 8 sunny yellow, 9 forest green, 10 d.grey,		80 000	III	
Wildflower	1 cream, 2 cold beige, 3 teddy brown, 4 caramel, 5 warm yellow, 6 nude, 7 pale rust, 8, dusty pink, 9 raspberry pink, 10 l.grey, 11 grey, 12 midnight blue, 13 forest green		25 000	III	
Laura	1 natural, 2 beige, 4 black		35 000	IV	
Lilac	1 natural, 2 beige, 3 l.grey, 7 d.green, 8 turquoise, 9 blue, 10 grey		60 000	IV	
Nori	1 nature, 2 l.grey, 3 grey-beige, 4 l. turquoise, 5 turquoise, 6 ocean blue, 7 green		50 000	IV	
Sky	1 off white, 2 l.grey, 3 greige, 4 gold beige, 5 anthracite, 6 blue, 7 green		>100 000	IV	
Togo	1 natural, 2 beige, 3 l.brown, 4 silver, 5 turquoise, 6 grey-brown, 7 d.grey		35 000	IV	
Wind	1 off-white, 2 flax, 3 beige, 4 l.brown, 5 black, 6 grey		>30 000	IV	

LEATHER	COLOR	PRICE GROUP
Touch	1 l.beige, 2 white, 3 grey-beige, 4 stone, 5 d.grey, 6 black, 7 brown, 8 cognac, 9 d.brown	LEATHER

FABRIC	COLOR	CARE INSTRUCTION	MARTIN-DALE	PRICE GROUP	CERTIFICATE
Linen L007	1 natural, 2 flax, 3 beige, 4 olive, 5 grey, 6 graphite		>20 000	EXCL	
Maple	1 off-white, 2 l. turquoise, 3 beige, 4 grey-beige, 5 grey		30 000	EXCL	
Pine	1 natural, 2 grey-beige, 3 grey, 4 l. turquoise		40 000	EXCL	

LEATHER	COLOR	PRICE GROUP
Anilina	1 latte, 2 cognac, 3 d.brown, 4 natural, 5 sand, 6 opal, 7 grey, 8 black	LEATHER

FLAME RETARDANT VERSION

FABRIC	COLOR	CARE INSTRUCTION	MARTINDALE	PRICE GROUP	CERTIFICATE
Star	1 natural, 2 beige, 3 grey-brown, 4 light grey, 5 grey, 6 blue-grey		30 000	I	
Atropa	1 grey-beige, 2 l.grey, 3 beige, 4 mustard, 5 orange, 6 cognac, 7 camel, 8 khaki, 9 d. blue, 10 grey		25 000	II	
King	1 natural, 2 beige, 4 l.grey, 5 grey-beige, 6 grey, 7 l.blue, 8 l.turquoise, 10 black-white		50 000	II	
Storm	1 off-white, 2 beige, 3 brown, 4 green, 5 light grey, 6 grey		90 000	II	
Caleido	1420 white, 1419 natural, 3/90 l.beige, 10050 grey-beige, 2990 powder pink, 1497 l.grey, 10997 grey, 2934 d.grey, 12025 yellow, 3644 coral, 9881 grey-green, 1988 indigo blue	natural fabric		III	
Caleido Stampato	1 natural, 2 beige, 4 cool beige, 6 olive, 7 turquoise, 8 l.blue, 9 d.blue, 10 steel, 11 grey-brown, 12 grey-beige	natural fabric		III	
Sneak	1 natural, 2 grey-beige, 3 l.turqise, 4 l.grey, 5 grey, 6 anthracite		38 000	III	
Spicy	1 natural, 2 l.beige, 3 warm beige, 4 dusty pink, 5 copper brown, 6 mustard, 7 olive green, 8 espresso brown, 9 grey, 10 d.blue		>40 000	III	
Elyot	1 natural, 2 l.brown, 4 salmon, 6 orange, 7 mustard, 8 green, 9 l.turquoise, 10 turquoise, 11 d.blue, 13 grey-beige, 14 grey		90 000	III	
Timber	1 l.beige, 3 grey brown, 4 greige, 5 ocean blue, 6 cream, 7 soft brown, 8 sunny yellow, 9 forest green, 10 d.grey,		80 000	III	
Bloom	1 cream, 2 teddy brown, 3 warm yellow, 4 pale orange, 5 warm red, 6 green, 7 blue, 8 grey, 9 midnight blue		80 000	IV	
Candy	1 natural, 2 l.grey, 3 blue, 4 l.turquoise, 5 summer green, 6 sunny yellow, 7 l.orange, 8 coral pink		25 000	IV	
Classic Velvet	4 l.grey, 5 grey, 6 anthracite, 11 d.blue, 12 navy blue, 16 yellow, 17 pink, 18 raspberry pink, 21 caramel, 22 teddy brown, 19 rust, 20 deep orange, 23 fango, 24 warm beige, 25 garden green, 26 forest green, 27 deep green, 28 turquoise		100 000	IV	
Heather	1 natural, 2 l.beige, 3 beige, 4 l.brown, 5 copper brown, 6 olive brown, 7 mustard green, 8 steel grey		50 000	IV	
Laura	1 natural, 2 beige, 4 black		35 000	IV	
Lilac	1 natural, 2 beige, 3 l.grey, red, 7 d.green, 8 turquoise, 9 blue, 10 grey		60 000	IV	
Moss	1 mustard, 2 d.green, 3 orange, 4 d.brown, 5 d.grey, 6 natural, 7 cold beige, 9 l.brown, 10 l.grey, 12 anthracite, 13 blue, 14 d.blue		25 000	IV	
Nori	1 natural, 2 l.grey, 3 grey-beige, 4 l.turquoise, 5 turquoise, 6 ocean blue, 7 green		50 000	IV	
Rock	1 natural, 2 l.grey, 3 beige, 4 cool beige, 5 brown, 6 anthracite		35 000	IV	
Sky	1 off white, 2 l.grey, 3 greige, 4 gold beige, 5 anthracite, 6 blue, 7 green		>100 000	IV	
Stipa	1 brown, 2 beige, 3 l.beige, 4 natural, 6 grey, 7 steel, 9 green		100 000	IV	
Togo	1 natural, 2 beige, 3 l.brown, 4 silver, 5 turquoise, 6 grey-brown 7 d.grey		35 000	IV	
Wildflower	1 cream, 2 cold beige, 3 teddy brown, 4 caramel, 5 warm yellow, 6 nude, 7 pale rust, 8, dusty pink, 9 raspbeary pink, 10 l.grey, 11 grey, 12 midnight blue, 13 forest green		25 000	IV	
Wind	1 off-white, 2 flax, 3 beige, 4 l. brown, 5 black, 6 grey	natural fabric		IV	



ACTONA
GROUP

sits.eu

facebook.com/sitseu